

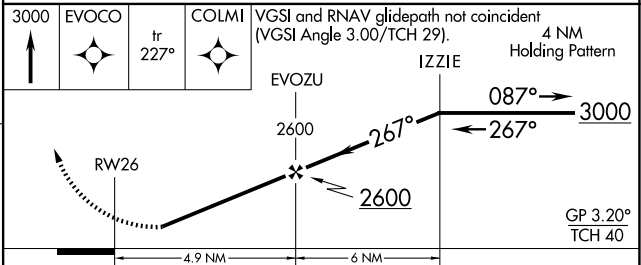
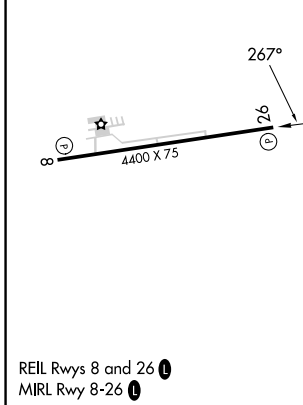
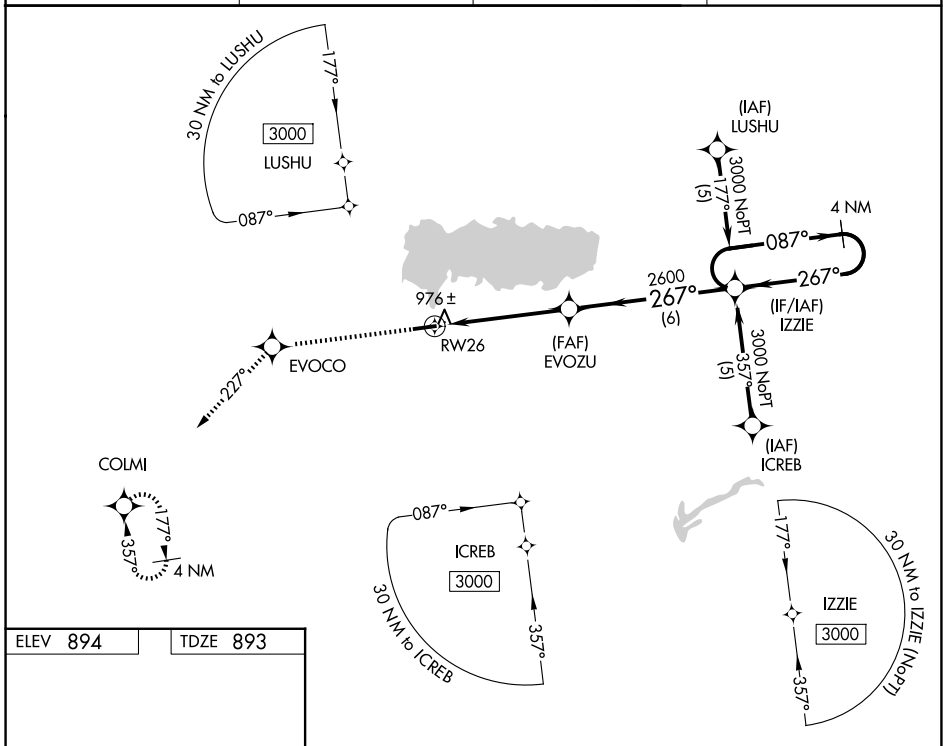
APP CRS	Rwy Ldg	4400
267°	TDZE	893
	Apt Elev	894

RNAV (GPS) RWY 26

LAKEFIELD (CQA)

RNP APCH - GPS.		MISSED APPROACH: Climb to 3000 direct EVOCO and on track 227° to COLMI and hold.
<p>▼ Baro-VNAV NA. Use AXV altimeter setting. When not received use DAY altimeter setting and increase LNAV/VNAV DA to 1349 feet and visibility all Cats ¼ SM, increase all MDA 80 feet and visibility Cat C ¼ SM. Helicopter visibility below ¾ SM NA.</p> <p>▲ NA</p>		

AXV AWOS-3PT 128.325	COLUMBUS APP CON 134.45 352.05	UNICOM 122.8 (CTAF)	123.3 0
--------------------------------	--	-------------------------------	----------------



CATEGORY	A	B	C	D
LNAV/VNAV DA	1277-1¼	384 (400-1¼)		NA
LNAV MDA	1260-1	367 (400-1)		NA
CIRCLING	1360-1 466 (500-1)	1400-1 506 (600-1)	1520-1¾ 626 (700-1¾)	NA

EC-2, 11 JUN 2026 to 09 JUL 2026

EC-2, 11 JUN 2026 to 09 JUL 2026