

WAAS CH 77719 W20A	APP CRS 205°	Rwy Idg TDZE Apt Elev	5000 884 892
----------------------------------------	------------------------	-----------------------------	-----------------------------------------

RNAV (GPS) RWY 20

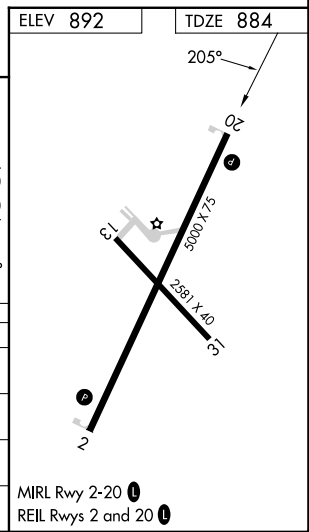
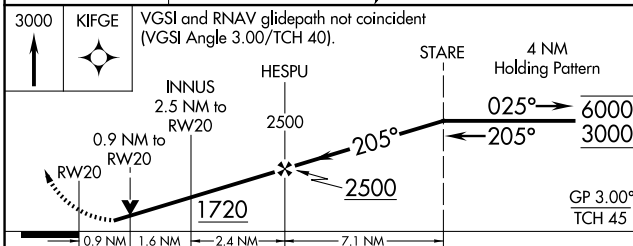
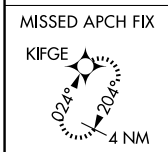
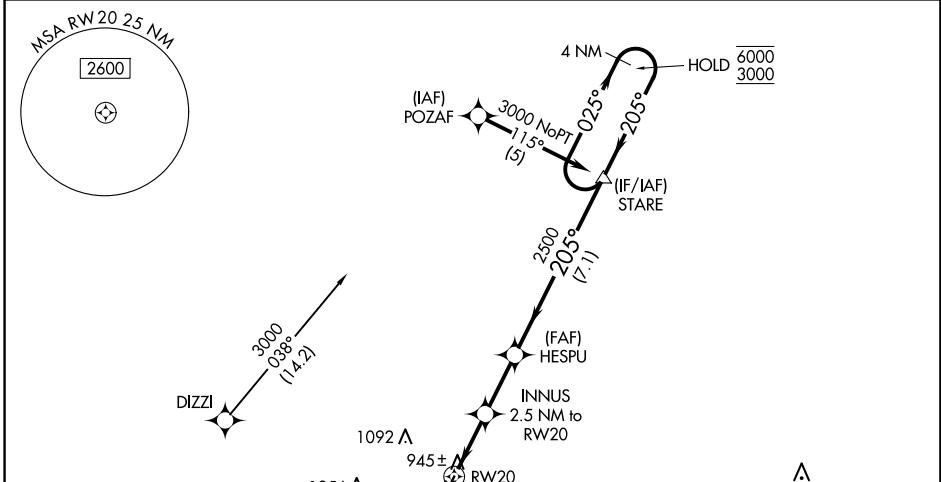
NEVADA MUNI (NVD)

RNP APCH - GPS.

NA Circling NA to Rwy 13 and 31. Baro-VNAV and VDP NA when using Joplin altimeter setting. Rwy 20 helicopter visibility reduction below 3/4 SM NA. For uncompensated Baro-VNAV systems, LNAV/VNAV NA below -16°C or above 54°C. When local altimeter setting not received, use Joplin altimeter setting: increase LPV DA to 1249 feet; increase LNAV/VNAV DA to 1326 feet and all visibilities 3/4 SM; increase all MDAs 120 feet and visibility Cat C 1/4 SM.

MISSED APPROACH: Climb to 3000 direct KIFGE and hold.

AWOS-3PT 119.175	KANSAS CITY CENTER 125.55 327.0	UNICOM 122.8 (CTAF) 0
----------------------------	-------------------------------------------	---------------------------------



CATEGORY	A	B	C	D
LPV DA		1139-1 255 (300-1)		NA
LNAV/VNAV DA		1216-1 332 (400-1)		NA
LNAV MDA		1200-1 316 (400-1)		NA
CIRCLING	1260-1 368 (400-1)	1440-1 548 (600-1)	1440-1½ 548 (600-1½)	NA

NC-3, 11 JUN 2026 to 09 JUL 2026

NC-3, 11 JUN 2026 to 09 JUL 2026