

WAAS CH 42635 W20A	APP CRS 198°	Rwy Ldg TDZE Apt Elev	5000 262 262
----------------------------------------	------------------------	-----------------------------	-----------------------------------------

RNAV (GPS) RWY 20

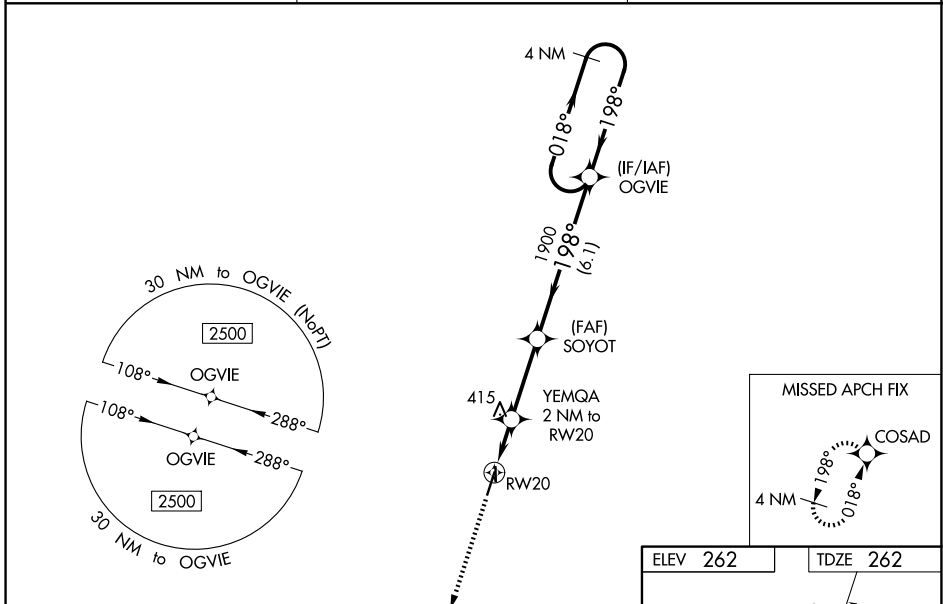
KENNETT MEML (TKX)

RNP APCH-GPS.

NA Circling to Rwy 18/36 NA at night. For uncompensated Baro-VNAV systems, LNAV/VNAV NA below -16°C or above 54°C. Circling NA west of Rwy 2 and 18. When local altimeter setting not received, use Blytheville altimeter setting and increase all DA 47 feet and all MDA 60 feet; increase LPV visibility 1/8 mile all Cats; increase LNAV/VNAV visibility 1/4 mile all Cats; increase LNAV Cat C/D and Circling Cat D visibility 1/4 mile. Rwy 20 helicopter visibility reduction below 3/4 SM NA. VDP and Baro-VNAV NA when using Blytheville Muni altimeter setting.

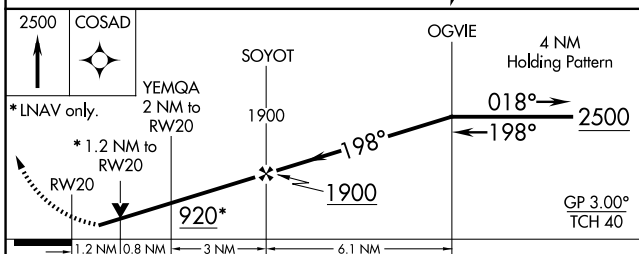
MISSED APPROACH: Climb to 2500 direct COSAD and hold.

AWOS-3PT 119.05	MEMPHIS CENTER 120.075 289.4	UNICOM 122.8 (CTAF) 0
---------------------------	----------------------------------------	---------------------------------



NC-3, 11 JUN 2026 to 09 JUL 2026

NC-3, 11 JUN 2026 to 09 JUL 2026



CATEGORY	A	B	C	D
LPV DA	554-1		292 (300-1)	
LNAV/VNAV DA	602-1 1/8		340 (400-1 1/8)	
LNAV MDA	680-1	418 (500-1)	680-1 1/8	418 (500-1 1/8)
CIRCLING	680-1 418 (500-1)	720-1 458 (500-1)	720-1 1/2 458 (500-1 1/2)	900-2 638 (700-2)

