

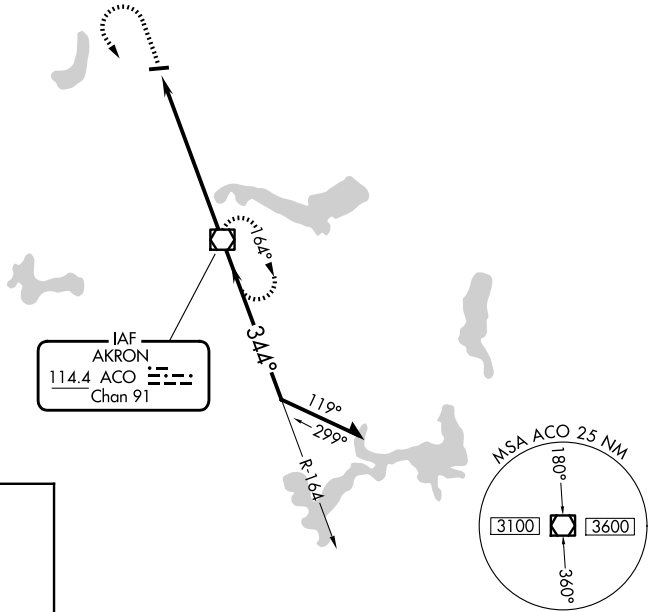
VOR/DME ACO <b>114.4</b> Chan <b>91</b>	APP CRS <b>344°</b>	Rwy Ldg TDZE Apt Elev <b>1198</b>	<b>N/A</b> <b>N/A</b> <b>1198</b>
---	------------------------	--------------------------------------	---

**VOR-A**  
PORTAGE COUNTY (POV)

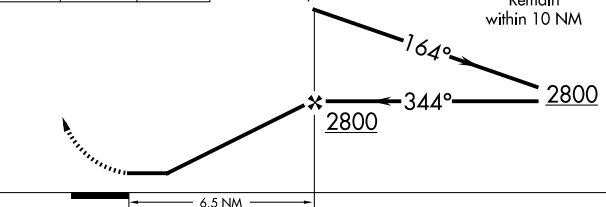
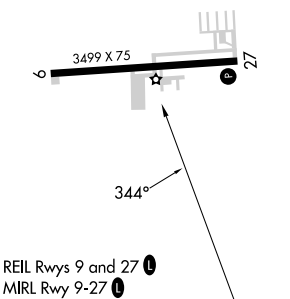
**⚠** When local altimeter setting not received, use CAK altimeter setting and increase all MDAs 60 feet and visibility Cat C ¼ SM.

**MISSED APPROACH:** Climb to 2900 then left turn direct ACO VOR/DME and hold.

AWOS-3 <b>118.675</b>	CLEVELAND APP CON★ <b>125.5 371.875</b>	CLNC DEL <b>125.65</b>	UNICOM <b>123.05</b> (CTAF) <b>Ⓛ</b>
--------------------------	--	---------------------------	---



ELEV 1198



FAF to MAP 6.5 NM						CATEGORY	A	B	C	D
Knots	60	90	120	150	180	CIRCLING	1740-1 542 (600-1)	1800-1 602 (700-1)	1860-1¾ 662 (700-1¾)	NA
Min:Sec	6:30	4:20	3:15	2:36	2:10					

EC-2, 11 JUN 2026 to 09 JUL 2026

EC-2, 11 JUN 2026 to 09 JUL 2026