

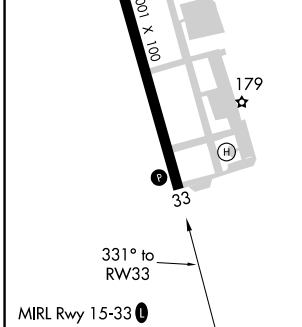
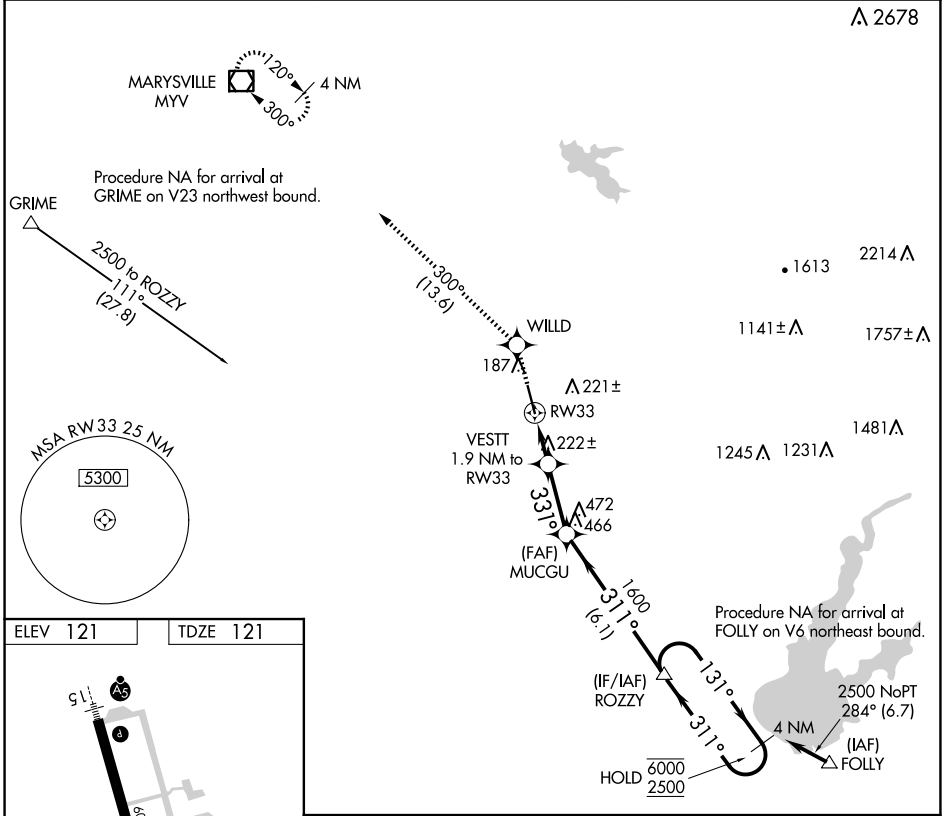
APP CRS	Rwy Idg	6001
331°	TDZE	121
	Apt Elev	121

RNAV (GPS) RWY 33

LINCOLN RGNL/KARL HARDER FLD (LHM)

RNP APCH.	MISSED APPROACH: Climb to 2000 direct WILLD and on track 300° to MYV VOR/DME and hold.
<p>▼ Rwy 33 helicopter visibility reduction below 3/4 SM NA. When local altimeter setting not received, use Beale AFB altimeter setting and increase all MDA 40 feet, and increase LNAV Cat C/D visibility 1/8 mile. VDP NA with Beale AFB altimeter setting.</p>	

AWOS-3 124.25	NORCAL APP CON 125.4 259.1	UNICOM 123.0 (CTAF) 0
-------------------------	--------------------------------------	---------------------------------



2000	WILLD	MYV	ROZZY
↑	✦	tr 300°	4 NM Holding Pattern
VESTT 1.9 NM to RW33		MUCCGU	ROZZY
0.9 NM to RW33		1600	4 NM Holding Pattern
0.9 NM		1.9 NM	2.6 NM
CATEGORY	A	B	C
LNAV MDA	480-1 359 (400-1)		

SW-2, 11 JUN 2026 to 09 JUL 2026

SW-2, 11 JUN 2026 to 09 JUL 2026