

# BARMY SIX DEPARTURE (RNAV)

SE-2, 11 JUN 2026 to 09 JUL 2026

CHARLOTTE DEP CON  
120.05 307.8  
AWOS-3  
120.825  
GCO  
121.725

RNAV 1 - DME/DME/IRU or GPS.  
RADAR required.

**TOP ALTITUDE:**  
**3000**



RALEIGH/DURHAM  
RDU

TAR RIVER  
TYI

FL180  
078°  
\*3300

(17)

084°  
FL180  
\*3400

(70)

NUTIZE

FL180  
077°  
\*1900

(39)

BATTA

FL180  
077°  
\*2100

(13)

BARMY

FL180  
088°  
\*10400

(18)

GULFY

MESHY

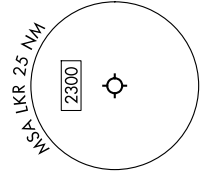
OLUBE

EBOOK



NOTE: Turbojet only.  
NOTE: If unable to accept climb rates, advise ATC on initial contact.  
NOTE: Transponder code will be issued via PDC or Charlotte CLNC DEL.  
NOTE: Upon reaching 10000 MSL, accelerate to and maintain 280K, if unable advise ATC.

TAKEOFF MINIMUMS  
Rwys 6, 24: Standard.



NOTE: Chart not to scale.

## DEPARTURE ROUTE DESCRIPTION

Climb on heading assigned by ATC on RADAR vectors to MESHY, then on depicted route to BARMY. Then on assigned transition. Maintain 3000, expect filed altitude 10 minutes after departure.

- NUTIZE TRANSITION (BARMY6.NUTIZE)
- RALEIGH/DURHAM TRANSITION (BARMY6.RDU)
- TAR RIVER TRANSITION (BARMY6.TYI)

# BARMY SIX DEPARTURE (RNAV)

SE-2, 11 JUN 2026 to 09 JUL 2026