

(BEAVY7.BEAVY) 26134

AL-5853 (FAA)

LANCASTER COUNTY-MC WHIRTER FLD (LKR)

# BEAVY SEVEN DEPARTURE (RNAV)

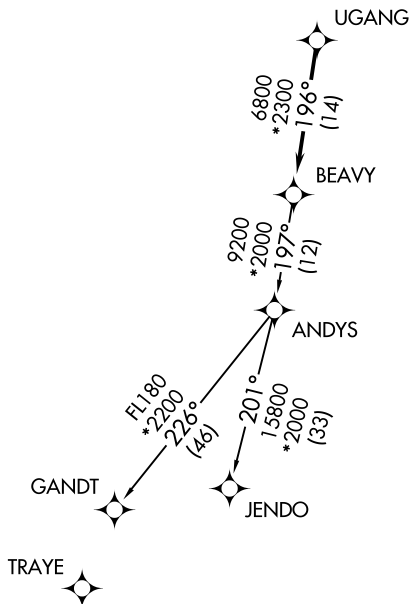
LANCASTER, SOUTH CAROLINA

CHARLOTTE DEP CON  
120.05 307.8  
AWOS-3  
120.825  
GCO  
121.725

RNAV 1 - DME/DME/IRU or GPS.

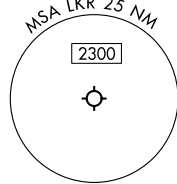
RADAR required.

**TOP ALTITUDE:  
3000**



TAKEOFF MINIMUMS  
Rwys 6, 24: Standard.

- NOTE: Turbojet only.
- NOTE: If unable to accept climb rates, advise ATC on initial contact.
- NOTE: Transponder code will be issued via PDC or Charlotte CLNC DEL.
- NOTE: Upon reaching 10000 MSL, accelerate to and maintain 280K, if unable advise ATC.



NOTE: Chart not to scale.

## DEPARTURE ROUTE DESCRIPTION

Climb on heading assigned by ATC, for RADAR vectors to UGANG, then on depicted route to BEAVY. Then on assigned transition, maintain 3000, expect filed altitude 10 minutes after departure.

GANDT TRANSITION (BEAVY7.GANDT)

JENDO TRANSITION (BEAVY7.JENDO)

# BEAVY SEVEN DEPARTURE (RNAV)

LANCASTER, SOUTH CAROLINA

LANCASTER COUNTY-MC WHIRTER FLD (LKR)

(BEAVY7.BEAVY) 14MAY26

SE-2, 11 JUN 2026 to 09 JUL 2026

SE-2, 11 JUN 2026 to 09 JUL 2026