

# BOBZY SIX DEPARTURE (RNAV)

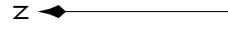
LANCASTER, SOUTH CAROLINA

SE-2, 11 JUN 2026 to 09 JUL 2026

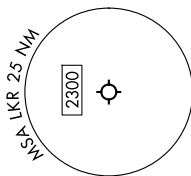
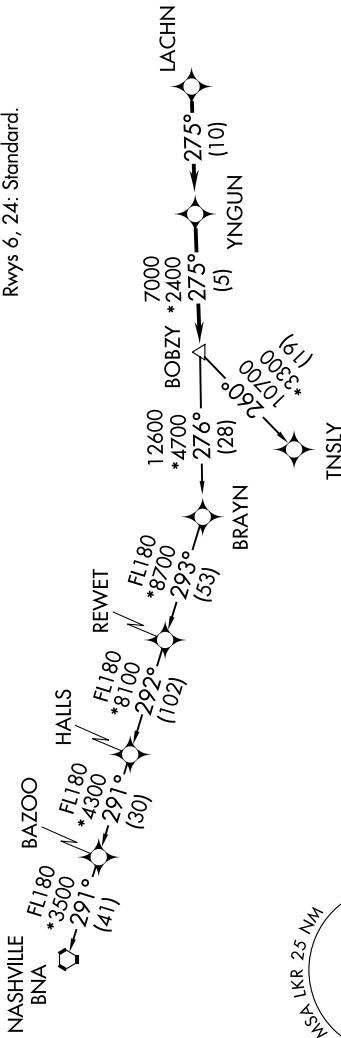
CHARLOTTE DEP CON  
 120.05 307.8  
 AWOS-3  
 120.825  
 GCO  
 121.725

RNAV 1 - DME/DME/IRU or GPS.  
 RADAR required.

**TOP ALTITUDE:**  
**3000**



TAKEOFF MINIMUMS  
 Rwy's 6, 24: Standard.



## DEPARTURE ROUTE DESCRIPTION

Climb on heading assigned by ATC, for RADAR vectors to LACHN, then on depicted route to BOBZY, then on assigned transition. Maintain 3000. Expect filed altitude 10 minutes after departure.

NASHVILLE TRANSITION (BOBZY6.BNA)  
TNSLY TRANSITION (BOBZY6.TNSLY)

- NOTE: Turbojet only.
- NOTE: If unable to accept climb rates, advise ATC on initial contact.
- NOTE: Transponder code will be issued via PDC or Charlotte CLNC DEL.
- NOTE: Upon reaching 10000 MSL, accelerate to and maintain 280K, if unable advise ATC.

NOTE: Chart not to scale.

# BOBZY SIX DEPARTURE (RNAV)

SE-2, 11 JUN 2026 to 09 JUL 2026