

(KWEEN6.KWEEN) 26134

AL-5853 (FAA)

LANCASTER COUNTY-MC WHIRTER FLD (LKR)
LANCASTER, SOUTH CAROLINA

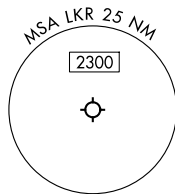
KWEEN SIX DEPARTURE (RNAV)

CHARLOTTE DEP CON
120.05 307.8
AWOS-3
120.825
GCO
121.725

RNAV 1 - DME/DME/IRU or GPS.

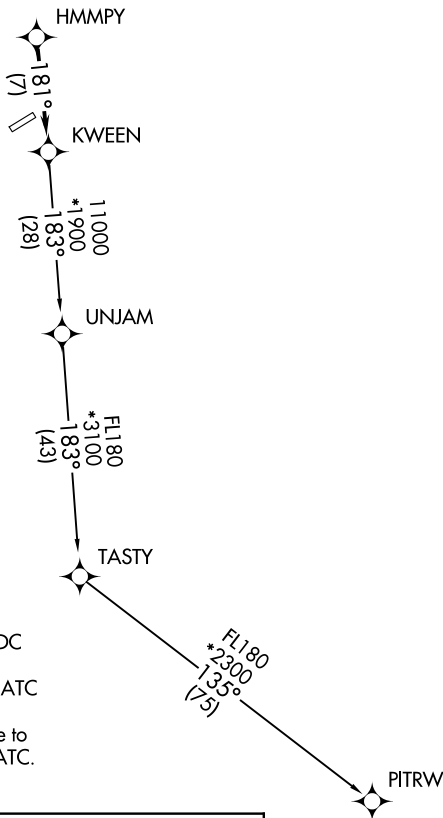
RADAR required.

**TOP ALTITUDE:
3000**



TAKEOFF MINIMUMS

Rwys 6, 24: Standard.



- NOTE: Turbojet only.
- NOTE: Transponder code will be issued via PDC or CLT CLNC DEL.
- NOTE: If unable to accept climb rates, advise ATC on initial contact.
- NOTE: Upon reaching 10000 MSL, accelerate to and maintain 280K, if unable advise ATC.

DEPARTURE ROUTE DESCRIPTION

Climb on heading assigned by ATC for RADAR vectors to HMMPY, then on track 181° to KWEEN, then on assigned transition, maintain 3000, expect filed altitude 10 minutes after departure.

PITRW TRANSITION (KWEEN6.PITRW)
UNJAM TRANSITION (KWEEN6.UNJAM)

NOTE: Chart not to scale.

KWEEN SIX DEPARTURE (RNAV)
(KWEEN6.KWEEN) 14MAY26

LANCASTER, SOUTH CAROLINA
LANCASTER COUNTY-MC WHIRTER FLD (LKR)

SE-2, 11 JUN 2026 to 09 JUL 2026

SE-2, 11 JUN 2026 to 09 JUL 2026