

WAAS CH <b>65717</b> <b>W20A</b>	APP CRS <b>195°</b>	Rwy Ldg <b>5900</b> TDZE <b>984</b> Apt Elev <b>984</b>
--	------------------------	---

# RNAV (GPS) RWY 20

FAYETTEVILLE MUNI (FYM)

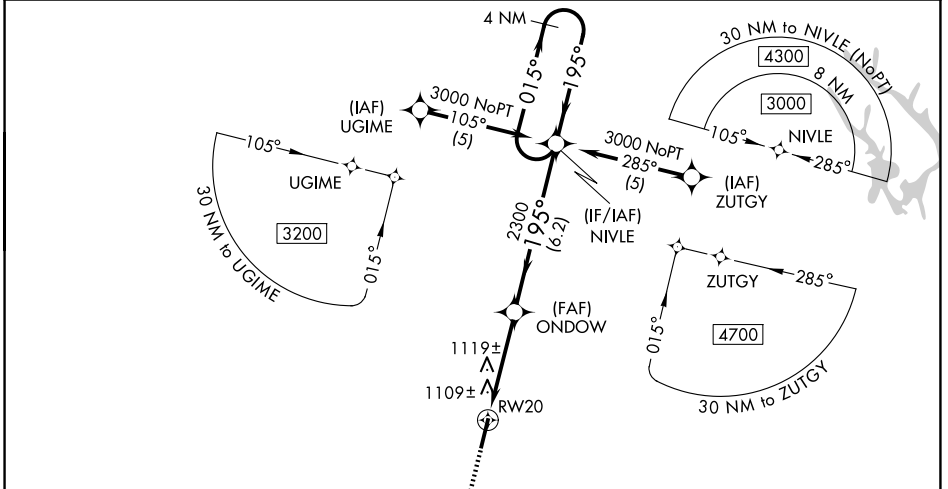
RNP APCH - GPS

**⚠** For uncompensated Baro-VNAV systems, LNAV/VNAV NA below -16°C (4°F) or above 46°C (114°F). Rwy 20 helicopter visibility reduction below ½ SM NA. When local altimeter setting not received use Huntsville Exec Tom Sharp Jr Fld altimeter setting and increase LPV DA to 1373 feet and all visibilities ½ SM; LNAV/VNAV DA to 1561 feet and all visibilities ¼ SM; increase all MDAs 120 feet and LNAV Cat C/D and Circling Cat C visibility ½ SM; Circling Cat D visibility ¼ SM. Baro-VNAV and VDP NA when using Huntsville Exec Tom Sharp Jr Fld altimeter setting. Inoperative table does not apply to LNAV/VNAV all Cals. Inoperative table does not apply to LNAV Cat C when using Huntsville Exec Tom Sharp Jr Fld altimeter setting.

**ODALS**

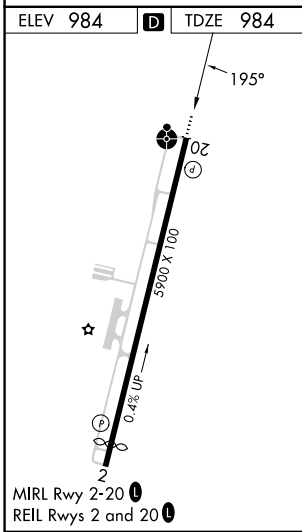
**MISSED APPROACH:**  
Climb to 3000 direct EZBUV and hold.

AWOS-3 <b>135.275</b>	HUNTSVILLE APP CON * <b>125.6 354.1</b>	CLNC DEL (GCO) <b>121.725</b>	UNICOM <b>122.8 (CTAF)</b>
--------------------------	--	----------------------------------	-------------------------------



SE-1, 11 JUN 2026 to 09 JUL 2026

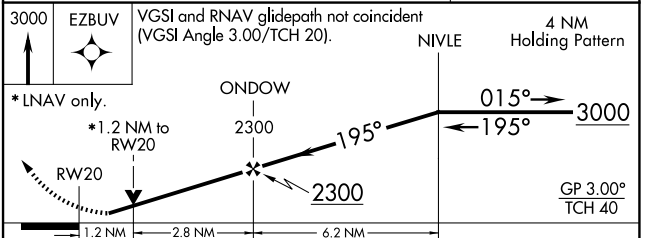
SE-1, 11 JUN 2026 to 09 JUL 2026



**MISSED APCH FIX**

**EZBUV**

4 NM



CATEGORY	A	B	C	D
LPV DA	1260-1 276 (300-1)			
LNAV/VNAV DA	1448-1¾ 464 (500-1¾)			
LNAV MDA	1380-¾ 396 (400-¾)			1380-1¼ 396 (400-1¼)
CIRCLING	1420-1 436 (500-1)	1540-1 556 (600-1)	1580-1½ 596 (600-1½)	1580-2 596 (600-2)