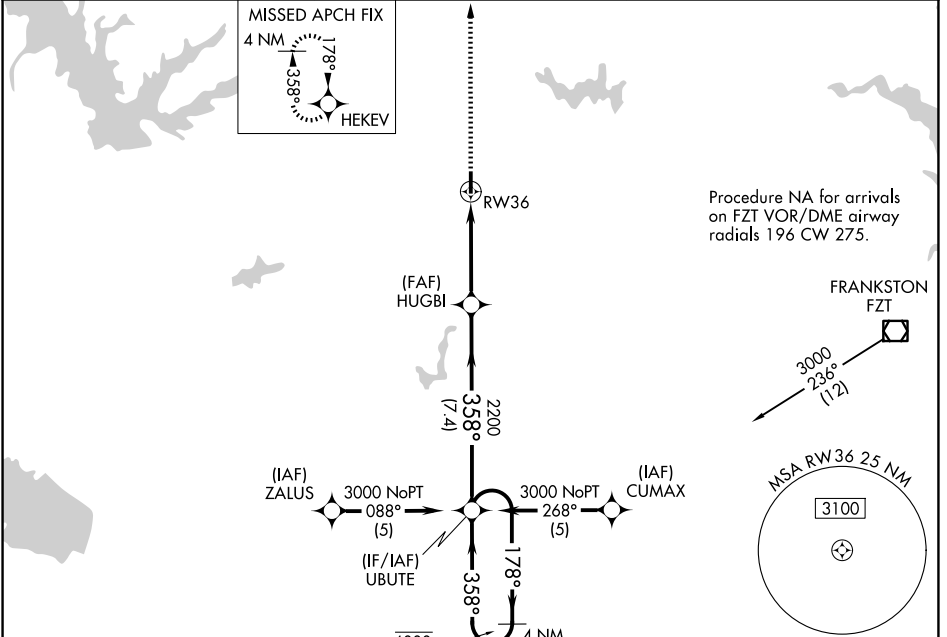


APP CRS	Rwy Ldg	<b>3988</b>
<b>358°</b>	TDZE	<b>444</b>
	Apt Elev	<b>444</b>

# RNAV (GPS) RWY 36

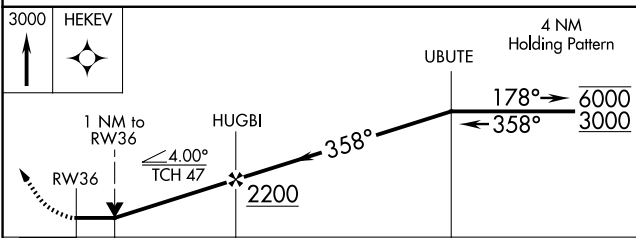
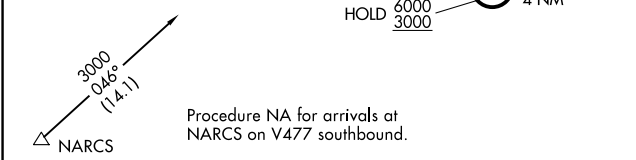
ATHENS MUNI (F44)

RNP APCH.		MISSED APPROACH: Climb to 3000 direct HEKEV and hold.
<p>Rwy 36 helicopter visibility reduction below 3/4 SM NA. When local altimeter setting not received, procedure NA.</p>		
AWOS-3PT <b>119.6</b>	FORT WORTH CENTER <b>135.25 279.65</b>	UNICOM <b>123.0 (CTAF)</b>



Procedure NA for arrivals on FZT VOR/DME airway radials 196 CW 275.

Procedure NA for arrivals at NARCS on V477 southbound.



ELEV 444	TDZE 444
----------	----------

MIRL Rwy 18-36

CATEGORY	A	B	C	D
RNAV MDA	900-1	456 (500-1)		NA
CIRCLING	980-1 536 (600-1)	1000-1 556 (600-1)		NA

SC-2, 11 JUN 2026 to 09 JUL 2026

SC-2, 11 JUN 2026 to 09 JUL 2026