

DALLAS FOUR DEPARTURE (DALL4, TTT) 27NOV25  
DALLAS FOUR DEPARTURE  
DENTON, TEXAS  
DENTON ENTERPRISE (DTON)

LONE STAR DEP CON  
118.1 306.95  
CLNC DEL  
123.95  
GND CON  
123.95  
DENTON TOWER\*  
119.95 (CTAF)

RADAR and DME required.

TAKEOFF MINIMUMS  
Rwys 18L/R, 36L/R: Standard.

TOP ALTITUDE:  
ASSIGNED BY ATC

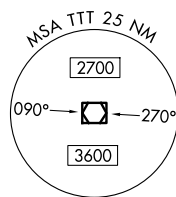
BONHAM  
114.6 BYP  
Chan 93

MAVERICK  
113.1 TTT  
Chan 78

GREGG COUNTY  
112.9 GGG  
Chan 76

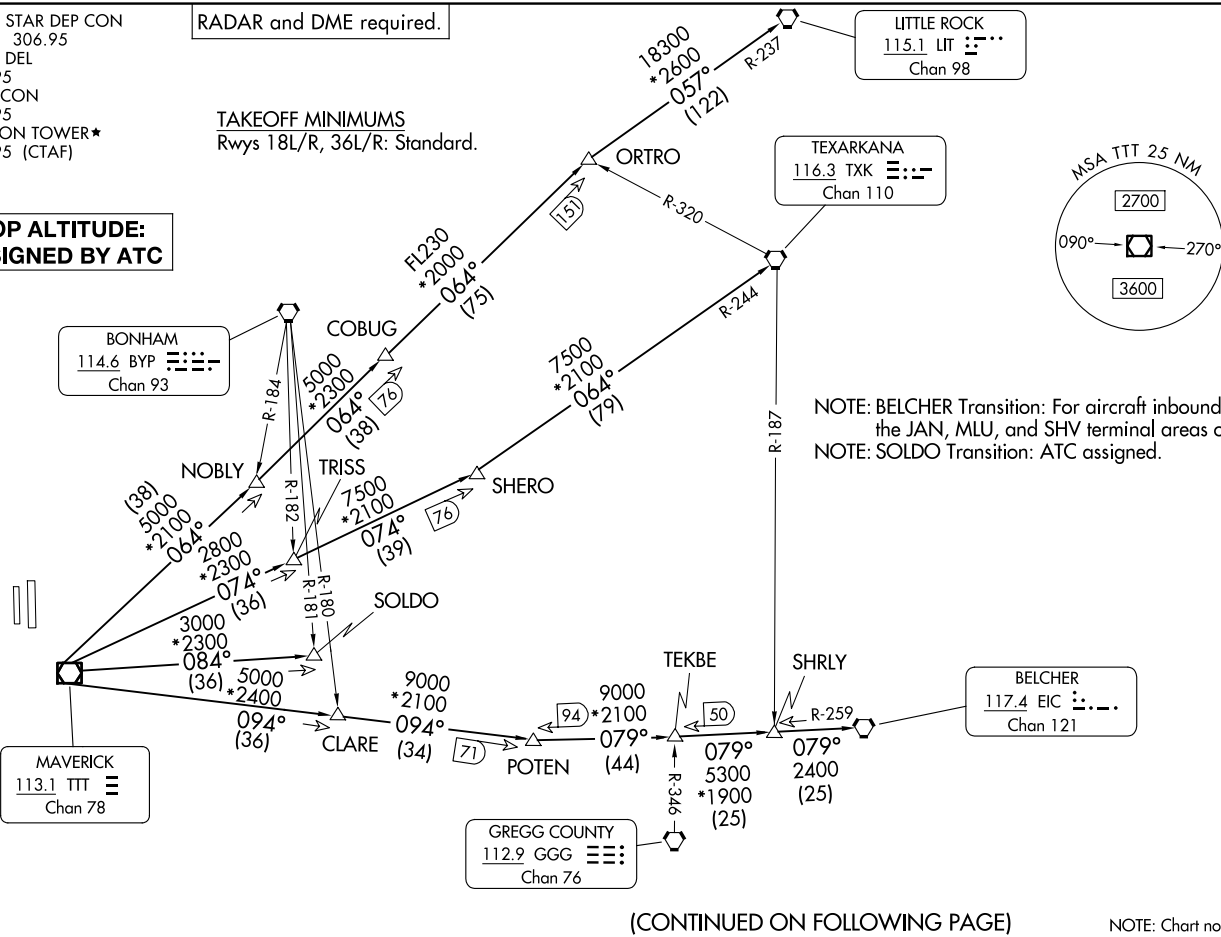
LITTLE ROCK  
115.1 LIT  
Chan 98

TEXARKANA  
116.3 TXK  
Chan 110



NOTE: BELCHER Transition: For aircraft inbound to the JAN, MLU, and SHV terminal areas only.  
NOTE: SOLDO Transition: ATC assigned.

BELCHER  
117.4 EIC  
Chan 121



(CONTINUED ON FOLLOWING PAGE)

NOTE: Chart not to scale.

(DALL4, TTT) 25331  
DALLAS FOUR DEPARTURE  
AL-5866 (FAA)  
DENTON ENTERPRISE (DTON)  
DENTON, TEXAS

# DALLAS FOUR DEPARTURE

DENTON, TEXAS



## DEPARTURE ROUTE DESCRIPTION

Fly assigned heading for RADAR vectors to appropriate route. Maintain ATC assigned altitude.

BELCHER TRANSITION (DALL4.EIC): From over TTT VOR/DME on TTT R-094 to POTEN, then on EIC R-259 to EIC VORTAC.

LITTLE ROCK TRANSITION (DALL4.LIT): From over TTT VOR/DME on TTT R-064 to ORTRO, then on LIT R-237 to LIT VORTAC.

SOLDO TRANSITION (DALL4.SOLDO): From over TTT VOR/DME on TTT R-084 to SOLDO.

TEXARKANA TRANSITION (DALL4.TXK): From over TTT VOR/DME on TTT R-074 to SHERO, then on TXK R-244 to TXK VORTAC.

SC-2, 11 JUN 2026 to 09 JUL 2026

SC-2, 11 JUN 2026 to 09 JUL 2026