

GARLAND SIX DEPARTURE  
(GARL6.TT) 17APR25

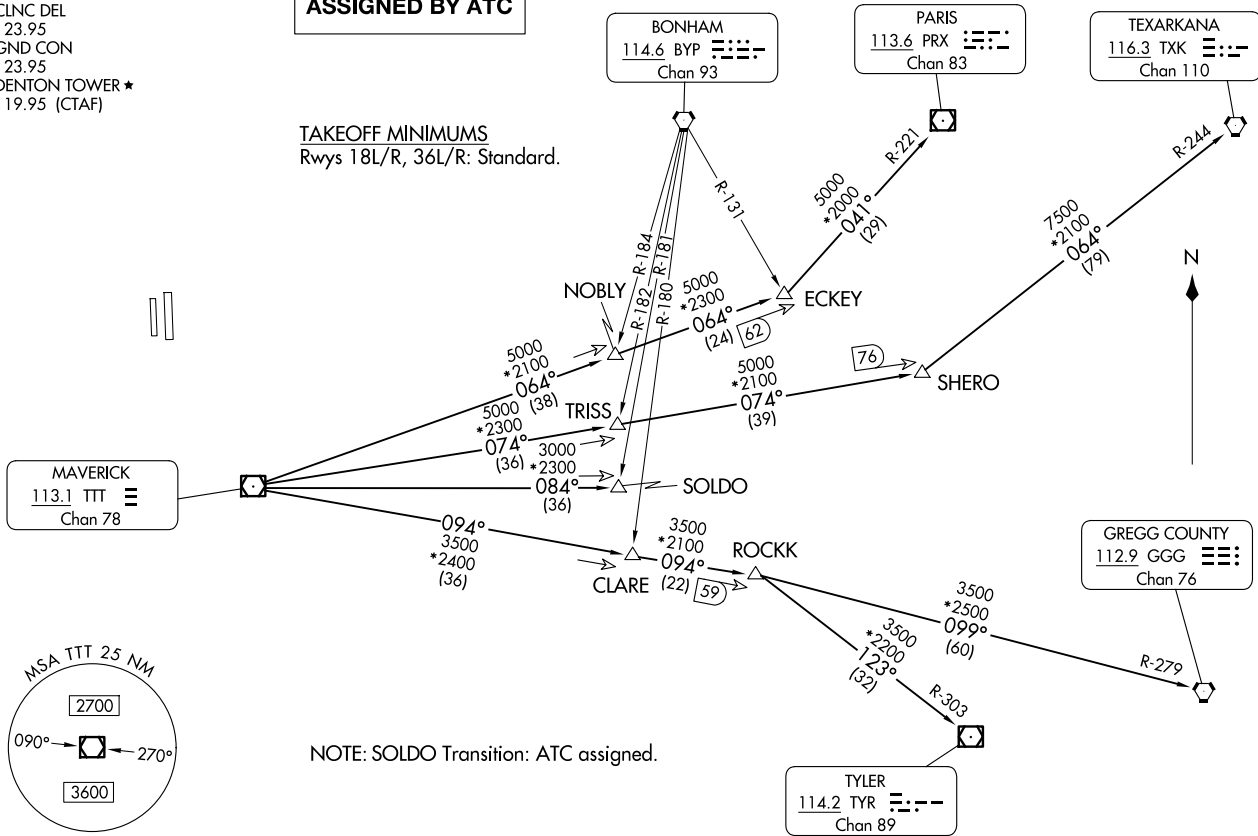
DENTON, TEXAS  
DENTON ENTERPRISE (D10)

LONE STAR DEP CON  
118.1 306.95  
CLNIC DEL  
123.95  
GND CON  
123.95  
DENTON TOWER \*  
119.95 (CTAF)

**TOP ALTITUDE:  
ASSIGNED BY ATC**

TAKEOFF MINIMUMS  
Rwys 18L/R, 36L/R: Standard.

**RADAR and DME required.**



(GARL6.TT) 25107  
GARLAND SIX DEPARTURE

AI-5866 (FAA)

DENTON ENTERPRISE (D10)  
DENTON, TEXAS

(CONTINUED ON FOLLOWING PAGE)

# GARLAND SIX DEPARTURE

DENTON, TEXAS



## DEPARTURE ROUTE DESCRIPTION

When entering controlled airspace, fly assigned heading for RADAR vectors to appropriate route. Maintain ATC assigned altitude.

GREGG COUNTY TRANSITION (GARL6.GGG): From over TTT VOR/DME on TTT R-094 to ROCKK, then on GGG R-279 to GGG VORTAC.

PARIS TRANSITION (GARL6.PRX): From over TTT VOR/DME on TTT R-064 to ECKEY, then on PRX R-221 to PRX VOR/DME.

SOLDO TRANSITION (GARL6.SOLDO): From over TTT VOR/DME on TTT R-084 to SOLDO.

TEXARKANA TRANSITION (GARL6.TXK): From over TTT VOR/DME on TTT R-074 to SHERO, then on TXK R-244 to TXK VORTAC.

TYLER TRANSITION (GARL6.TYR): From over TTT VOR/DME on TTT R-094 to ROCKK, then on TYR R-303 to TYR VOR/DME.

SC-2, 11 JUN 2026 to 09 JUL 2026

SC-2, 11 JUN 2026 to 09 JUL 2026