

WAAS CH <b>56543</b> <b>W36B</b>	APP CRS <b>357°</b>	Rwy Ldg TDZE Apt Elev	36L <b>5003</b> <b>641</b> <b>643</b>	36R <b>6502</b> <b>639</b> <b>643</b>
--	------------------------	-----------------------------	--	--

# RNAV (GPS) RWY 36L

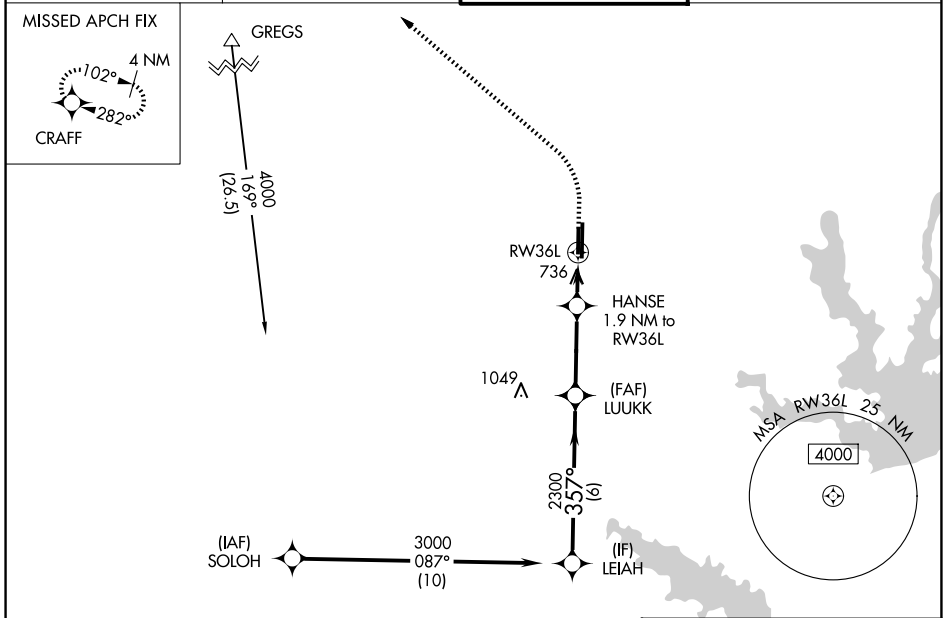
DENTON ENTERPRISE (DTON)

RNP APCH - GPS.

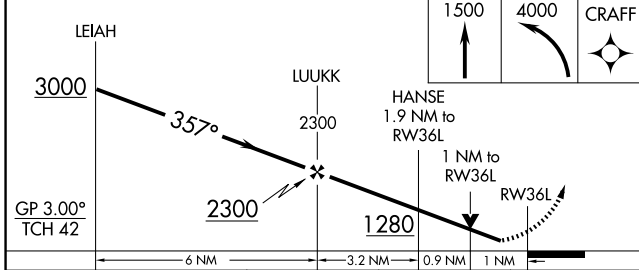
**⚠** For uncompensated Baro-VNAV systems, LNAV/VNAV NA below -9°C or above 54°C. Rwy 36L helicopter visibility reduction below 3/4 SM NA.

MISSED APPROACH: Climb to 1500 then climbing left turn to 4000 direct CRAFT and hold, continue climb-in-hold to 4000.

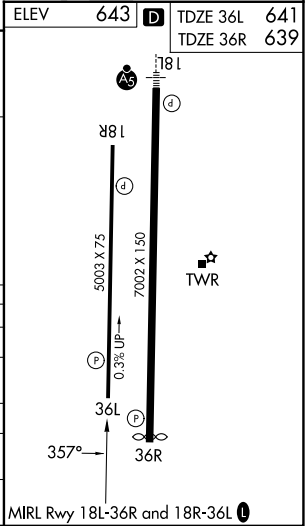
ATIS <b>119.325</b>	LONE STAR APP CON <b>118.1 306.95</b>	<b>DENTON TOWER</b> ★ <b>119.95</b> (CTAF) <b>0</b>	GND CON <b>123.95</b>
------------------------	--	--	--------------------------



ELEV	643	TDZE 36L	641
		TDZE 36R	639



CATEGORY	A	B	C	D
LPV DA		891-3/4	250 (300-3/4)	
LNAV/VNAV DA		992-1	351 (400-1)	
LNAV MDA		1000-1	359 (400-1)	
SIDESTEP 36R	1040-1	401 (400-1)	1040-1 1/2 401 (400-1 1/2)	1040-2 401 (400-2)
CIRCLING	1100-1 457 (500-1)	1260-1 617 (700-1)	1380-2 737 (800-2)	1380-2 1/4 737 (800-2 1/4)



SC-2, 11 JUN 2026 to 09 JUL 2026

SC-2, 11 JUN 2026 to 09 JUL 2026