

DENTON, TEXAS

AL-5866 (FAA)

25275

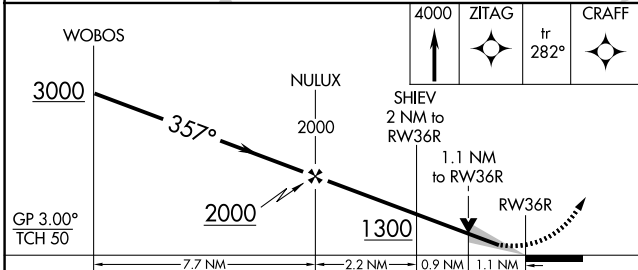
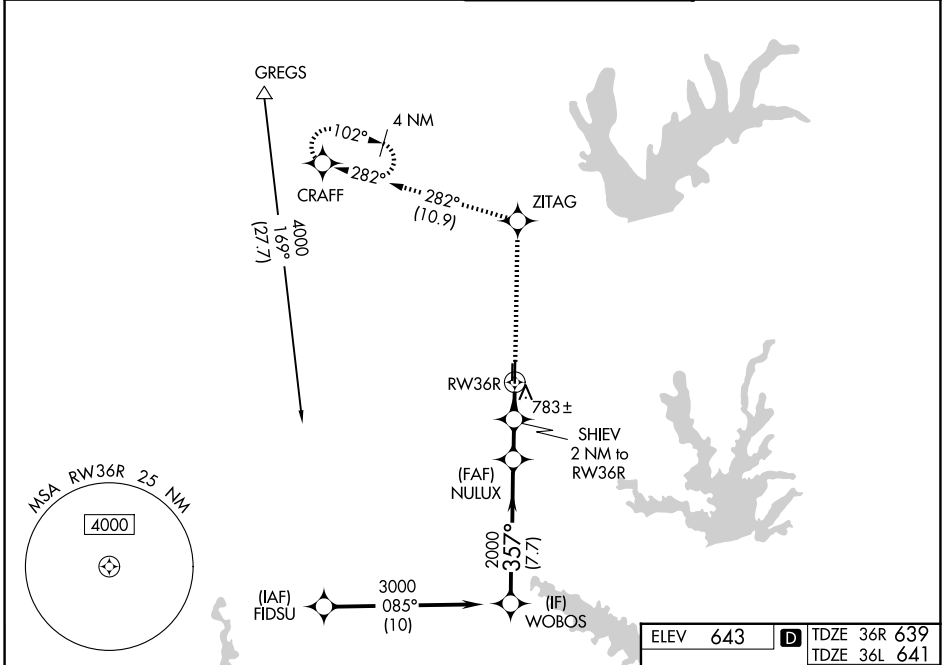
WAAS CH <b>87043</b> <b>W36A</b>	APP CRS <b>357°</b>	Rwy Ldg TDZE Apt Elev	36R <b>6502</b> <b>639</b> <b>643</b>	36L <b>5003</b> <b>641</b> <b>643</b>
--	------------------------	-----------------------------	--	--

# RNAV (GPS) RWY 36R

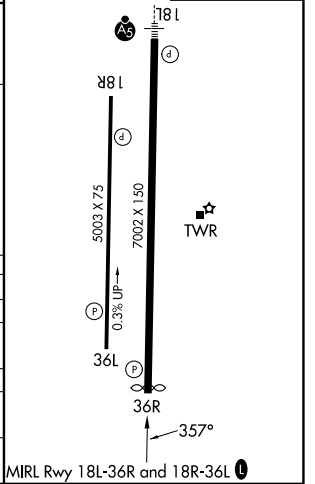
DENTON ENTERPRISE (D'TO)

RNP APCH-GPS.		MISSED APPROACH: Climb to 4000 direct ZITAG and on track 282° to CRAFT and hold.	
<p>▼ ▲ For uncompensated Baro-VNAV systems, LNAV/VNAV NA below -9°C or above 54°C.</p>			

ATIS <b>119.325</b>	LONE STAR APP CON <b>118.1 306.95</b>	DENTON TOWER ★ <b>119.95</b> (CTAF) <b>0</b>	GND CON <b>123.95</b>
------------------------	--	---	--------------------------



ELEV 643	<b>D</b> TDZE 36R 639
	TDZE 36L 641



CATEGORY	A	B	C	D
LPV DA		839- <sup>3</sup> / <sub>4</sub>	200 (200- <sup>3</sup> / <sub>4</sub> )	
LNAV/VNAV DA		964-1	325 (400-1)	
LNAV MDA	1040-1	401 (400-1)	1040-1 <sup>1</sup> / <sub>8</sub>	401 (400-1 <sup>1</sup> / <sub>8</sub> )
SIDESTEP 36L	1040-1	399 (400-1)	1040-1 <sup>1</sup> / <sub>2</sub> 399 (400-1 <sup>1</sup> / <sub>2</sub> )	1040-2 399 (400-2)
CIRCLING	1100-1 457 (500-1)	1260-1 617 (700-1)	1380-2 737 (800-2)	1380-2 <sup>1</sup> / <sub>4</sub> 737 (800-2 <sup>1</sup> / <sub>4</sub> )

DENTON, TEXAS  
Orig-A 16MAY24

33°12'N-97°12'W

# DENTON ENTERPRISE (D'TO)

## RNAV (GPS) RWY 36R

SC-2, 11 JUN 2026 to 09 JUL 2026

SC-2, 11 JUN 2026 to 09 JUL 2026