

WAAS CH <b>86524</b> <b>W27A</b>	APP CRS <b>268°</b>	Rwy Ldg <b>5000</b> TDZE <b>2925</b> Apt Elev <b>2933</b>
----------------------------------------	------------------------	-----------------------------------------------------------------

# RNAV (GPS) RWY 27

GARRETT COUNTY (2G4)

RNP APCH - GPS.

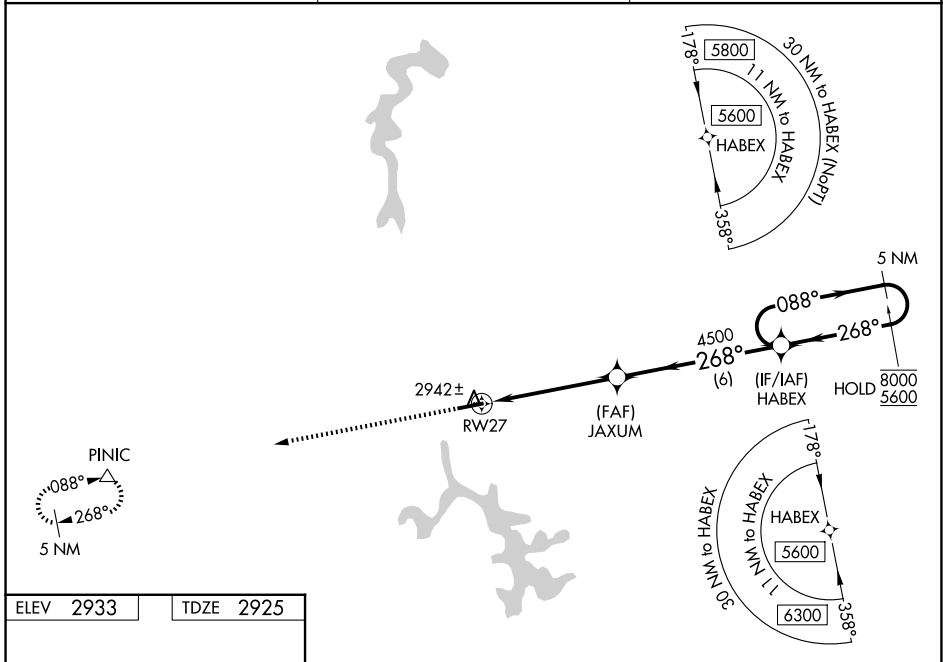
**⚠** For uncompensated Baro-VNAV systems, LNAV/VNAV NA below -20°C or above 54°C. Baro-VNAV and VDP NA when using MGW altimeter setting. When local altimeter setting not received, use MGW altimeter setting and increase LPV DA to 3425 feet and all visibilities  $\frac{3}{8}$  SM. Increase LNAV/VNAV DA to 3475 feet and all visibilities  $\frac{3}{8}$  SM; increase all MDAs 300 feet and LNAV visibility Cat C  $\frac{3}{8}$  SM, and Circling visibility Cat C 1 SM.

MISSED APPROACH:  
Climb 5700 direct  
PINIC and hold.

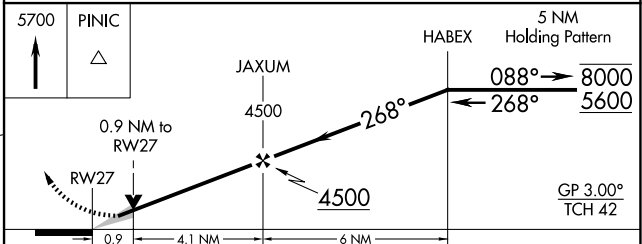
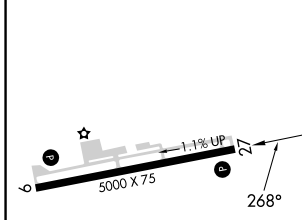
AWOS-3  
**120.125**

CLARKSBURG APP CON ★  
**119.425 284.65**

UNICOM  
**123.0 (CTAF) ①**



ELEV 2933	TDZE 2925
-----------	-----------



CATEGORY	A	B	C	D
LPV DA	3125-1	200 (200-1)		NA
LNAV/VNAV DA	3175-1	250 (300-1)		NA
LNAV MDA	3200-1	275 (300-1)		NA
CIRCLING	3380-1 447 (500-1)	3400-1 467 (500-1)	3500-1½ 567 (600-1½)	NA

REIL Rwy 9 and 27 ①  
MIRL Rwy 9-27 ①

NE-3, 11 JUN 2026 to 09 JUL 2026

NE-3, 11 JUN 2026 to 09 JUL 2026