

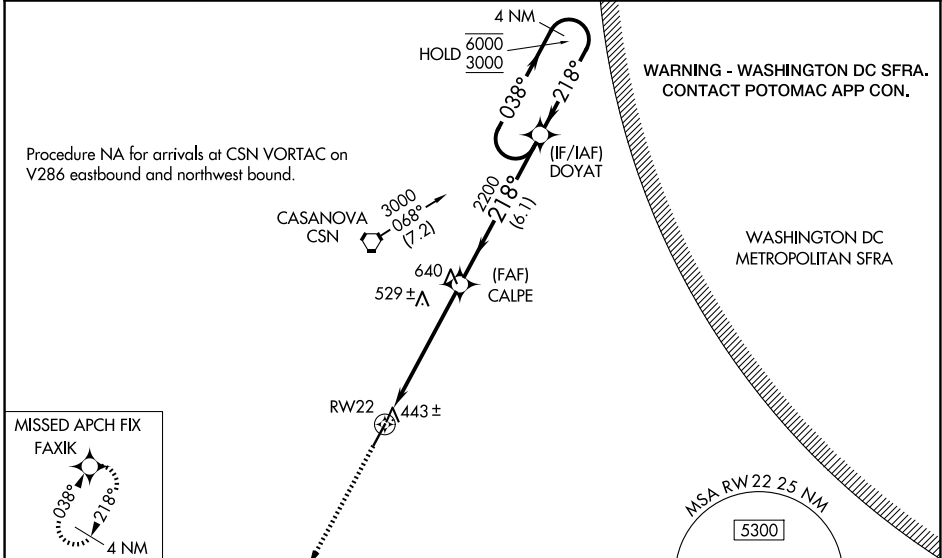
WAAS CH <b>56306</b> <b>W22A</b>	APP CRS <b>218°</b>	Rwy Ldg TDZE Apt Elev	<b>5000</b> <b>315</b> <b>316</b>
--	------------------------	-----------------------------	---

# RNAV (GPS) RWY 22

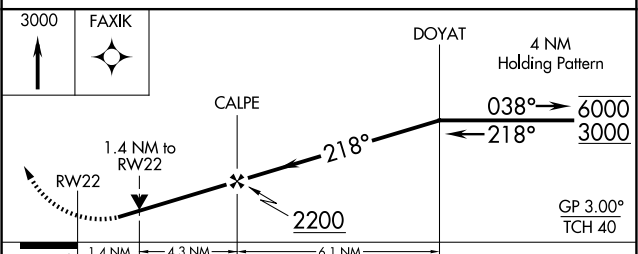
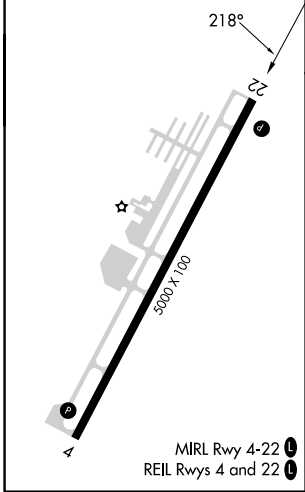
CULPEPER RGNL (CJR)

RNP APCH - GPS.	<p><b>▽</b> Rwy 22 helicopter visibility reduction below 3/4 SM NA. For uncompensated Baro-VNAV systems, LNAV/VNAV NA below -15°C or above 48°C. Baro-VNAV and VDP NA when using IAD altimeter setting. When local altimeter setting not received, use IAD altimeter setting and increase LPV DA to 730 feet; increase LNAV/VNAV DA to 776 feet; increase all MDAs 80 feet and visibility Cats C 1/4 SM and D 1/2 SM.</p>	<p><b>▲</b> MISSED APPROACH: Climb to 3000 direct FAXIK and hold.</p>
-----------------	---	---

AWOS-3 <b>119.325</b>	POTOMAC APP CON <b>128.525 306.925</b>	CLNC DEL <b>121.6</b>	UNICOM <b>123.075 (CTAF) ①</b>
--------------------------	---	--------------------------	-----------------------------------



ELEV 316	TDZE 315
----------	----------



CATEGORY	A	B	C	D
LPV DA	657-1 1/4 342 (400-1 1/4)			
LNAV/VNAV DA	703-1 1/2 388 (400-1 1/2)			
LNAV MDA	800-1	485 (500-1)	800-1 1/4 485 (500-1 1/4)	800-1 1/2 485 (500-1 1/2)

NE-3, 11 JUN 2026 to 09 JUL 2026

NE-3, 11 JUN 2026 to 09 JUL 2026