

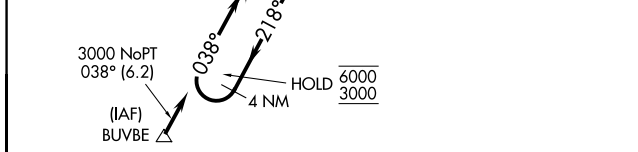
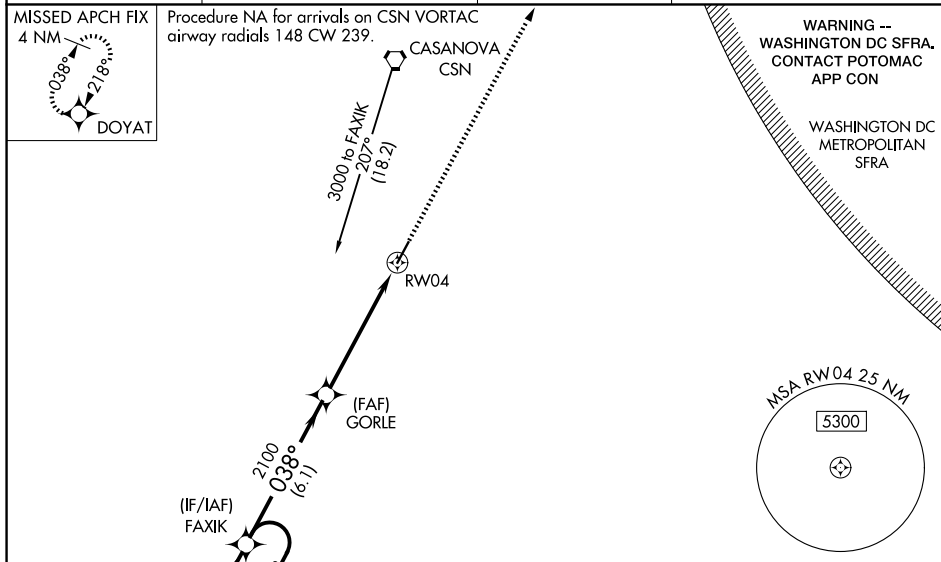
WAAS CH <b>77606</b> <b>W04A</b>	APP CRS <b>038°</b>	Rwy Ldg TDZE Apt Elev	<b>5000</b> <b>316</b> <b>316</b>
--	------------------------	-----------------------------	---

# RNAV (GPS) RWY 4

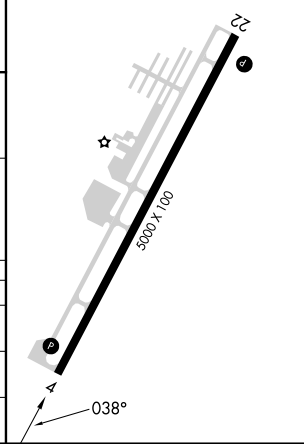
CULPEPER RGNL (CJR)

RNP APCH - GPS.		<p><b>MISSED APPROACH:</b> Climb to 3000 direct DOYAT and hold.</p>
<p><b>⚠</b> Rwy 4 helicopter visibility reduction below 3/4 SM NA. For uncompensated Baro-VNAV systems, LNAV/VNAV NA below -15°C or above 48°C. Baro-VNAV and VDP NA when using IAD altimeter setting. When local altimeter setting not received, use IAD altimeter setting and increase LPV DA to 683 feet; increase LNAV/VNAV DA to 906 feet; increase all MDAs 80 feet and visibility Cats C/D 1/4 SM.</p>		

AWOS-3 <b>119.325</b>	POTOMAC APP CON <b>128.525 306.925</b>	CLNC DEL <b>121.6</b>	UNICOM <b>123.075 (CTAF) 1</b>
--------------------------	---	--------------------------	-----------------------------------



ELEV 316	TDZE 316
REIL Rwys 4 and 22 1	
MIRL Rwy 4-22 1	



NE-3, 11 JUN 2026 to 09 JUL 2026

NE-3, 11 JUN 2026 to 09 JUL 2026