

|   |                        |   |
|---|------------------------|---|
| VORTAC IGB<br><b>116.2</b><br>Chan <b>109</b> | APP CRS<br><b>124°</b> | Rwy Ldg<br>TDZE<br>Apt Elev<br><b>N/A</b><br><b>N/A</b><br><b>205</b> |
|---|------------------------|---|

# VOR/DME-B

MCCHAREN FLD (M83)

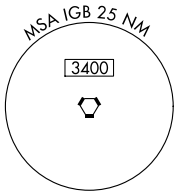
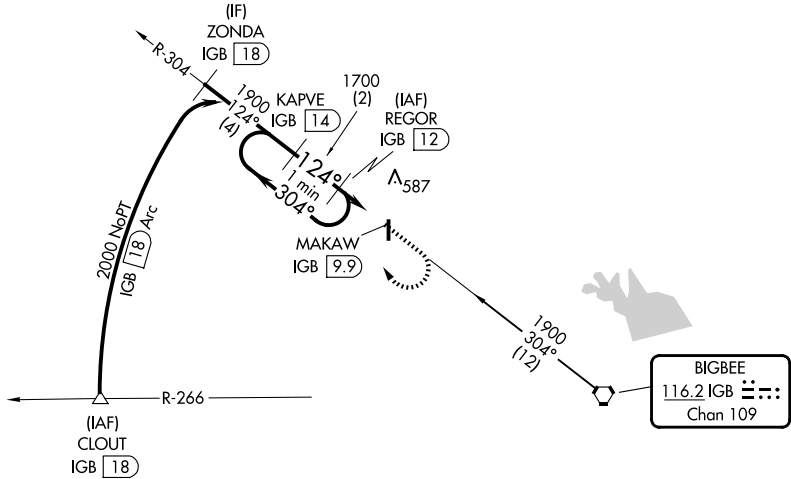
**▼** Use Golden Triangle Rgnl altimeter setting, when not received, use Columbus AFB altimeter setting. Helicopter visibility reduction below 1 SM NA. Procedure NA at night.

**▲ NA**

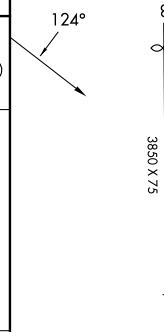
**MISSED APPROACH:** Climb to 1200 then climbing right turn to 1900 heading 352° and via IGB R-304 to REGOR/IGB 12 DME and hold.

COLUMBUS APP CON ★  
**135.6 323.275**

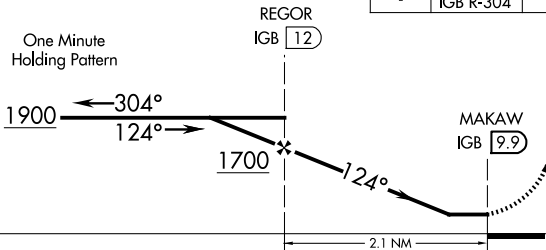
CTAF  
**122.9**



ELEV 205



One Minute Holding Pattern



| CATEGORY | A                    | B                    | C                    | D  |
|----------|----------------------|----------------------|----------------------|----|
| CIRCLING | 920-1<br>715 (800-1) | 940-1<br>735 (800-1) | 940-2<br>735 (800-2) | NA |

MIRL Rwy 18-36

SC-4, 11 JUN 2026 to 09 JUL 2026

SC-4, 11 JUN 2026 to 09 JUL 2026