

WAAS CH 62827 W23A	APP CRS 232°	Rwy Ldg TDZE Apt Elev	7100 93 93
--	------------------------	-----------------------------	---------------------------------------

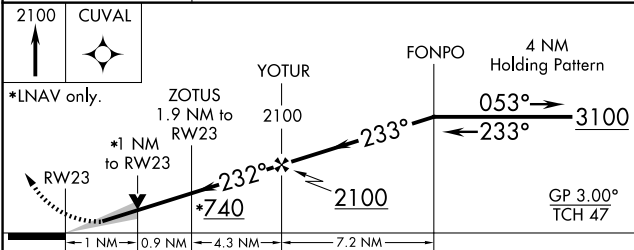
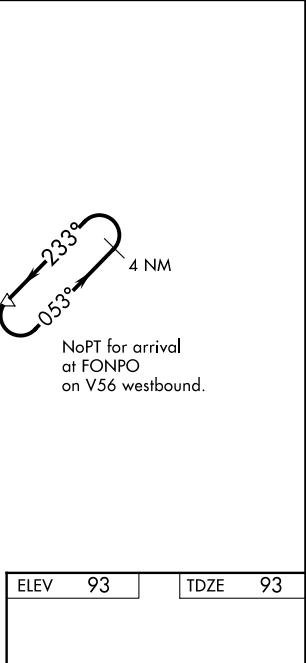
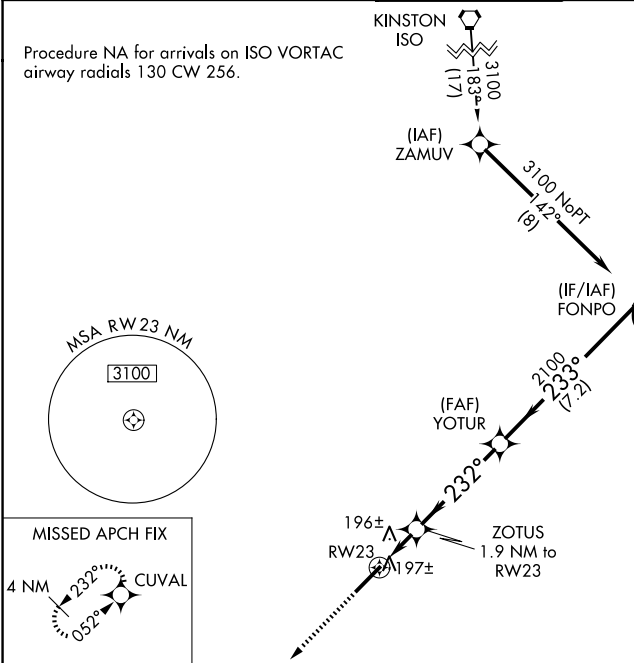
RNAV (GPS) RWY 23

ALBERT J ELLIS (O.A.J)

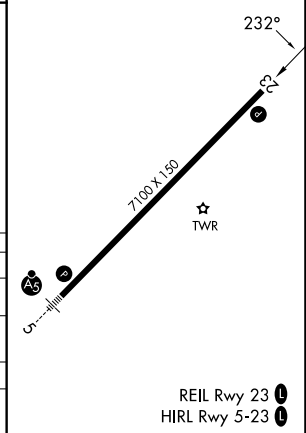
⚠ Baro-VNAV NA when using Wilmington altimeter setting. For uncompensated Baro-VNAV systems, LNAV/VNAV NA below -15°C (5°F) or above 43°C (109°F). DME/DME RNP-0.3 NA. VDP NA with Wilmington altimeter setting. When local altimeter setting not received, use Wilmington altimeter setting and increase LPV DA to 387 feet and all visibilities ½ SM. Increase LNAV/VNAV DA to 591 feet; increase all MDAs 100 feet and LNAV visibility Cat C/D ¼ SM, and Circling visibility Cat C/D ¼ SM.

MISSED APPROACH:
Climb to 2100 direct
CUVAL and hold.

ATIS 124.475	WILMINGTON APP CON ★ 135.75 317.425	ELLIS TOWER ★ 132.65 (CTAF) 0	GND CON 125.4	UNICOM 122.95
------------------------	---	---	-------------------------	-------------------------



CATEGORY	A	B	C	D
LPV DA		293-¾	200 (200-¾)	
LNAV/ VNAV DA		497-1⅓	404 (500-1⅓)	
LNAV MDA		460-1	367 (400-1)	
CIRCLING	540-1 447 (500-1)	560-1 467 (500-1)	720-1¼ 627 (700-1¼)	720-2 627 (700-2)



SE-2, 11 JUN 2026 to 09 JUL 2026

SE-2, 11 JUN 2026 to 09 JUL 2026