

WAAS CH <b>87104</b> <b>W18A</b>	APP CRS <b>185°</b>	Rwy Ldg TDZE <b>418</b> Apt Elev <b>418</b>
--	------------------------	---

# RNAV (GPS) RWY 18

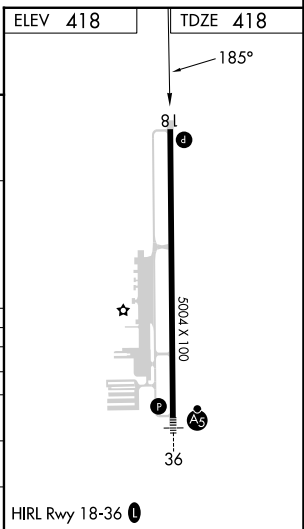
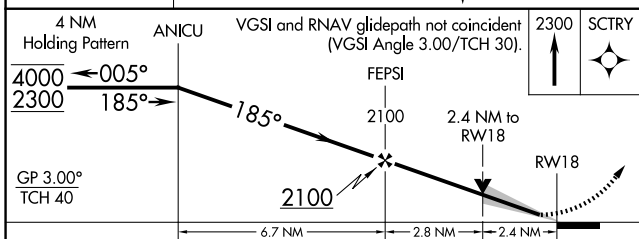
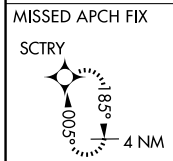
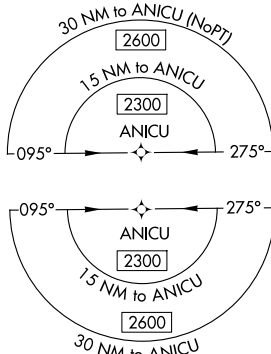
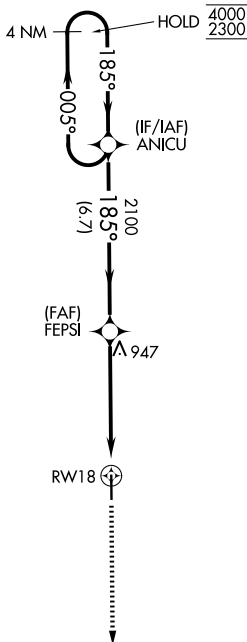
PERRY-HOUSTON COUNTY (PXE)

RNP APCH-GPS.

▼ Baro-VNAV and VDP NA when using Middle Georgia Rgnl altimeter setting.  
 ▲ For uncompensated Baro-VNAV systems, LNAV/VNAV NA below -15°C or above 54°C.  
 When local altimeter setting not received, use Middle Georgia Rgnl altimeter setting and increase LPV DA to 656 feet; increase LNAV/VNAV DA to 857 feet and all visibilities ½ SM. Increase all MDAs 40 feet; and Circling visibility Cat A and D ¼ SM.

MISSED APPROACH: Climb to 2300 direct SCTRY and hold.

AWOS-3 <b>123.825</b>	ATLANTA APP CON ★ <b>124.2 279.6</b>	UNICOM <b>122.725 (CTAF) 0</b>
--------------------------	---	-----------------------------------



CATEGORY	A	B	C	D
LPV DA		618-3/4	200 (200-3/4)	
LNAV/VNAV DA		819-1 1/8	401 (500-1 1/8)	
LNAV MDA	1200-1 782 (800-1)	1200-1 1/4 782 (800-1 1/4)	1200-2 1/2 782 (800-2 1/2)	782 (800-2 1/2)
CIRCLING	1200-1 782 (800-1)	1200-1 1/4 782 (800-1 1/4)	1200-2 1/2 782 (800-2 1/2)	1280-2 3/4 862 (900-2 3/4)