

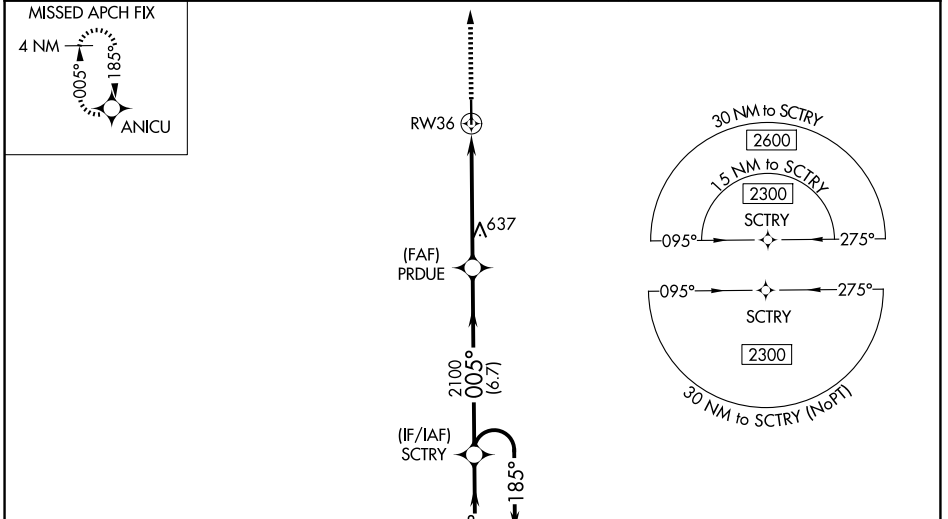
WAAS CH 86805 W36A	APP CRS 005°	Rwy Ldg TDZE 417 Apt Elev 418
--	------------------------	---

RNAV (GPS) RWY 36

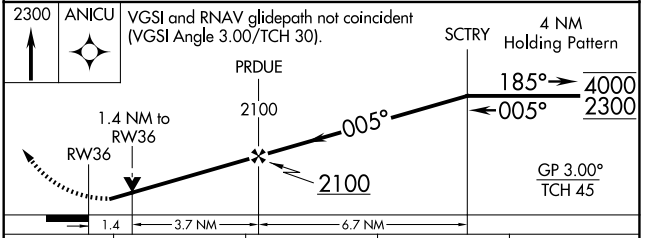
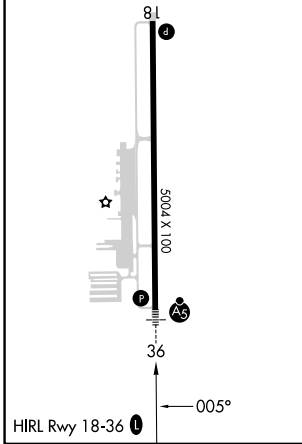
PERRY-HOUSTON COUNTY (PXE)

RNP APCH-GPS.	MALSRL	MISSED APPROACH: Climb to 2300 direct ANICU and hold.
---------------	--------	--

AWOS-3 123.825	ATLANTA APP CON * 124.2 279.6	UNICOM 122.725 (CTAF) 0
--------------------------	---	-----------------------------------



ELEV 418	TDZE 417
-----------------	-----------------



CATEGORY	A	B	C	D
LPV DA		667- ³ / ₄	250 (300- ³ / ₄)	
LNAV/VNAV DA		667- ³ / ₄	250 (300- ³ / ₄)	
LNAV MDA	900- ³ / ₄	483 (500- ³ / ₄)	900-1	483 (500-1)
CIRCLING	900-1	482 (500-1)	1140-2 722 (800-2)	1280-2 ³ / ₄ 862 (900-2 ³ / ₄)

SE-4, 11 JUN 2026 to 09 JUL 2026

SE-4, 11 JUN 2026 to 09 JUL 2026