

(PITKN5.GLENO) 26134

PITKN FIVE DEPARTURE (RNAV)

ASPEN-PITKIN COUNTY/SARDY FLD (ASE)

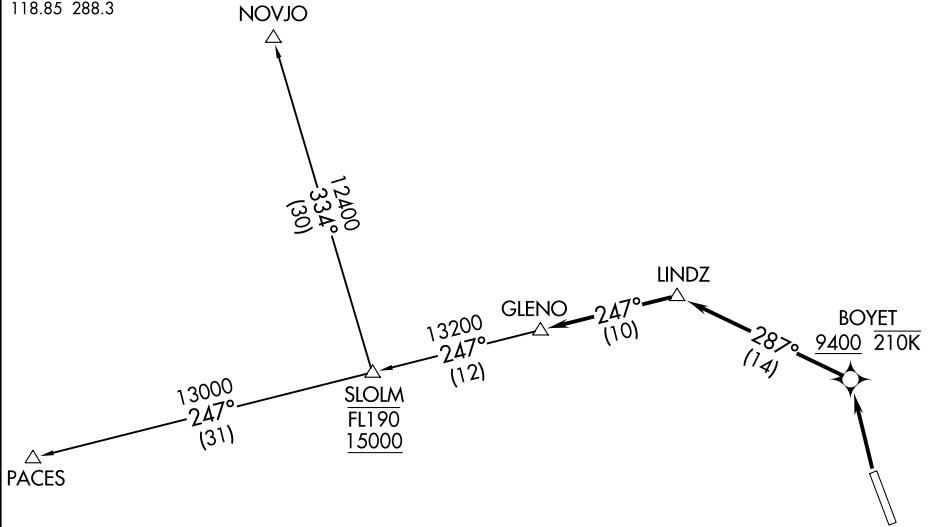
AL-5889 (FAA)

ASPEN, COLORADO

ASPEN DEP CON ★
 123.8 288.3
 DENVER CENTER
 119.85 363.15
 ATIS
 120.4
 CLNC DEL
 125.475
 GND CON
 121.9
 ASPEN TOWER ★
 118.85 288.3

RNAV 1 - GPS.

TOP ALTITUDE:
16000



SW-1, 11 JUN 2026 to 09 JUL 2026

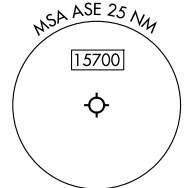
SW-1, 11 JUN 2026 to 09 JUL 2026

TAKEOFF MINIMUMS

Rwy 15: NA - Environmental.

Rwy 33: 300-1 with minimum climb of 500'/NM to 11200.

NOTE: Chart not to scale.



DEPARTURE ROUTE DESCRIPTION

TAKEOFF RUNWAY 33: Climb direct BOYET to cross at or above 9400 and at or below 210K, then on track 287° to LINDZ, then on track 247° to GLENO, thence. . . .

. . . .on transition or assigned route, maintain 16000, expect clearance to filed altitude 10 minutes after departure.

NOVJO TRANSITION (PITKN5.NOVJO)

PACES TRANSITION (PITKN5.PACES)

PITKN FIVE DEPARTURE (RNAV)

(PITKN5.GLENO) 16MAY24

ASPEN, COLORADO
 ASPEN-PITKIN COUNTY/SARDY FLD (ASE)