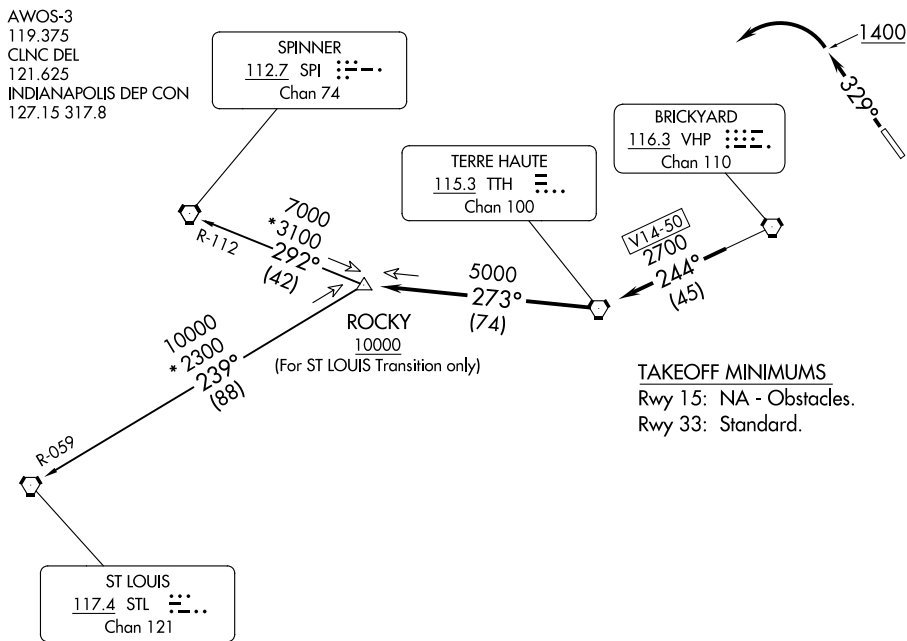


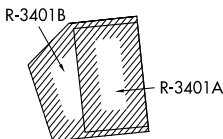
**(ROCKY1.ROCKY) 23334**  
**ROCKY ONE DEPARTURE**

AL-5902 (FAA)

**INDIANAPOLIS METRO (UMP)**  
 INDIANAPOLIS, INDIANA



- NOTE: RADAR required.
- NOTE: Select appropriate localizer/DME frequency/channel prior to departure.
- NOTE: Turbojets accelerate to 250K until reaching 10000, if unable advise ATC.
- NOTE: Assigned to aircraft with a requested altitude of 11000 or above.



NOTE: Chart not to scale.

**DEPARTURE ROUTE DESCRIPTION**

**TAKEOFF RWY 33:** Climb heading 329° to 1400 before turning left. Then on assigned heading to assigned altitude. Thence . . . .

**DEPARTING ALL OTHER AUTHORIZED RUNWAYS:** Climb on assigned heading to assigned altitude. Thence . . . .

. . . . expect RADAR vectors to join VHP R-244 to TTH VORTAC, then via TTH R-273 to ROCKY INT then via transition or assigned route. Expect clearance to requested altitude ten minutes after departure.

**SPINNER TRANSITION (ROCKY1.SPI):** From over ROCKY INT on SPI R-112 to SPI VORTAC.  
**ST LOUIS TRANSITION (ROCKY1.STL):** From over ROCKY INT on STL R-059 to STL VORTAC.

**(ROCKY1.ROCKY) 01FEB18**  
**ROCKY ONE DEPARTURE**

**INDIANAPOLIS, INDIANA**  
**INDIANAPOLIS METRO (UMP)**

EC-2, 11 JUN 2026 to 09 JUL 2026

EC-2, 11 JUN 2026 to 09 JUL 2026