

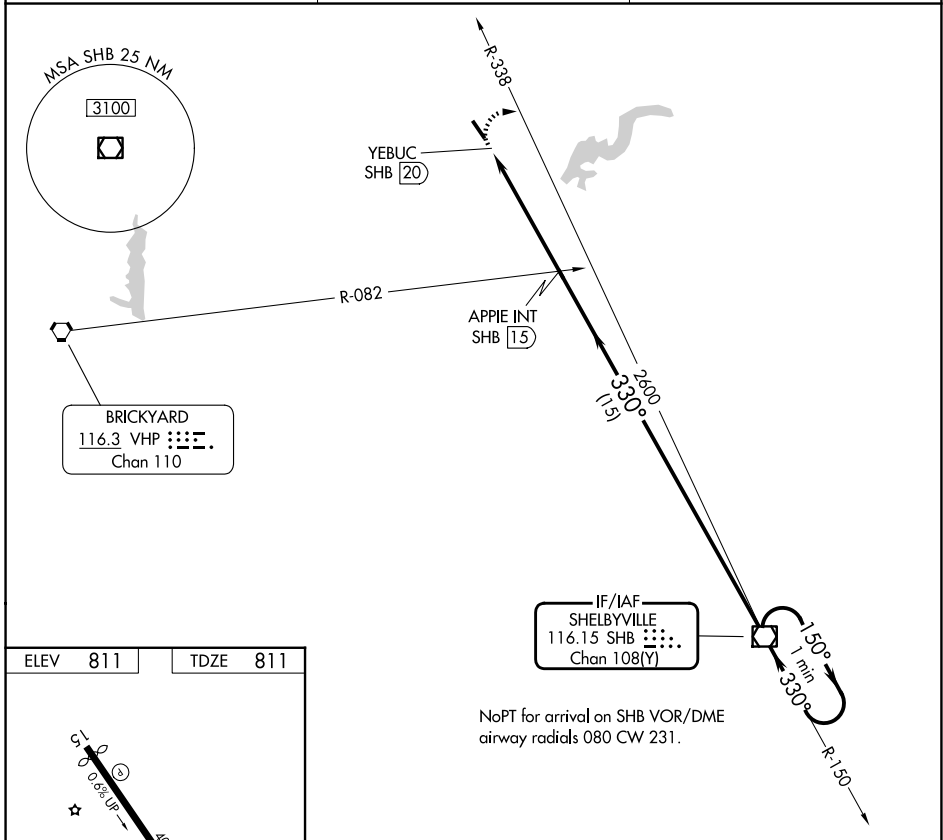
VOR/DME SHB 116.15 Chan 108 (Y)	APP CRS 330°	Rwy Ldg TDZE Apt Elev	4004 811 811
---	------------------------	-----------------------------	---

VOR RWY 33
INDIANAPOLIS METRO (UMP)

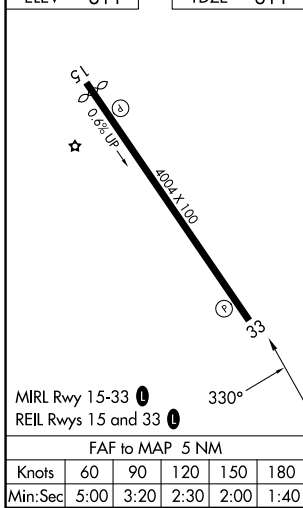
NA When local altimeter setting not received, use Indianapolis Intl altimeter setting and increase all MDA 60 feet, increase S-33 and Circling Cat C visibility to 1¾. Rwy 33 helicopter visibility reduction below ¾ SM NA.

MISSED APPROACH: Climbing right turn to 2600 on SHB VOR/DME R-338 direct SHB VOR/DME and hold.

AWOS-3PT 119.375	INDIANAPOLIS APP CON 127.15 317.8	UNICOM 123.0 (CTAF) 0
----------------------------	---	---------------------------------



ELEV 811	TDZE 811
-----------------	-----------------



2600	SHB	APPIE INT SHB 15	SHB VOR/DME	One Minute Holding Pattern
SHB R-338				
YEBUC SHB 20	330°	2600	150°	2600
	≤ 3.00° TCH 40		← 330°	
VGSI and descent angles not coincident (VGSI Angle 3.50/TCH 27).				
	0.5	5 NM	15 NM	
CATEGORY	A	B	C	D
S-33	1340-1	529 (600-1)	1340-1½ 529 (600-1½)	NA
CIRCLING	1340-1	529 (600-1)	1340-1½ 529 (600-1½)	NA

EC-2, 11 JUN 2026 to 09 JUL 2026

EC-2, 11 JUN 2026 to 09 JUL 2026