

APP CRS	Rwy Ldg	<b>4002</b>
<b>240°</b>	TDZE	<b>632</b>
	Apt Elev	<b>632</b>

# RNAV (GPS) RWY 24

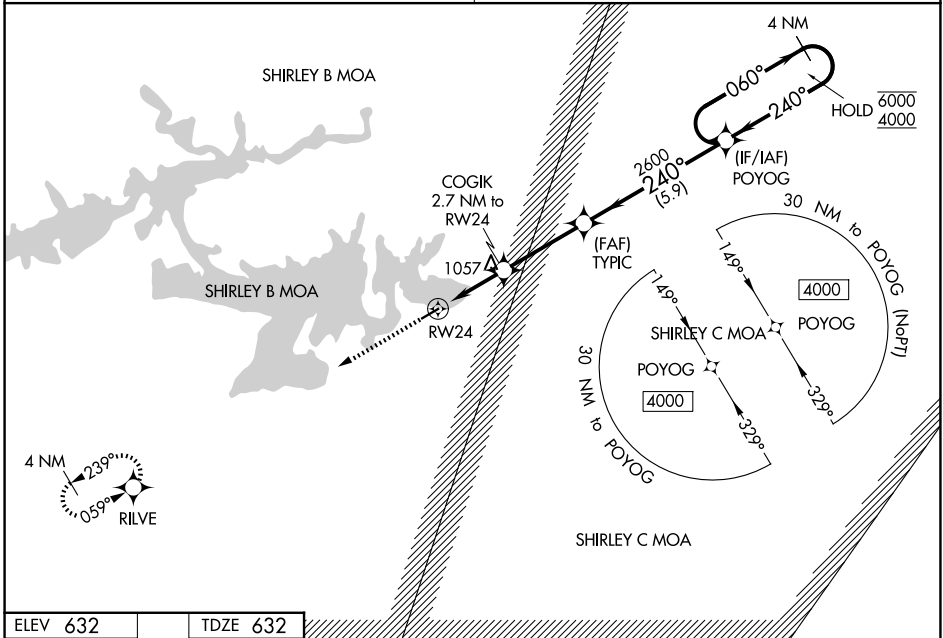
HEBER SPRINGS MUNI (HBZ)

RNP APCH

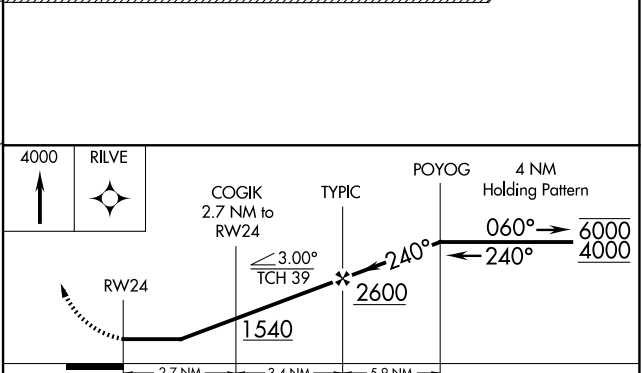
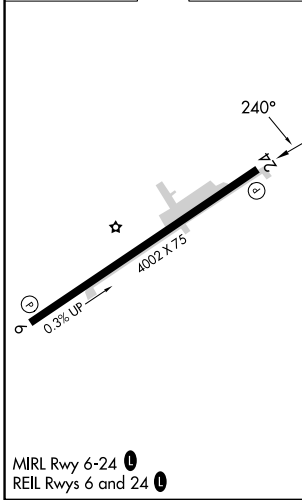
Procedure NA at night. Rwy 24 helicopter visibility reduction below 1 SM NA. Obtain local altimeter setting on CTAF; when not received, use Batesville altimeter setting and increase all MDAs 80 feet, and increase LNAV visibility Cat B ¼ SM, Cat C and D ½ SM. Increase Circling visibility Cat B, C ¼ SM, and Cat D ½ SM.

MISSED APPROACH: Climb to 4000 direct RILVE and hold, continue climb-in-hold to 4000.

MEMPHIS CENTER <b>126.85 281.55</b>	UNICOM <b>122.7 (CTAF) 0</b>
--	---------------------------------



ELEV 632	TDZE 632
----------	----------



CATEGORY	A	B	C	D
LNAV MDA	1320-1	688 (700-1)	1320-2	688 (700-2)
CIRCLING	1320-1 688 (700-1)	1380-1 748 (800-1)	1380-2¼ 748 (800-2¼)	1440-2½ 808 (900-2½)

SC-1, 11 JUN 2026 to 09 JUL 2026

SC-1, 11 JUN 2026 to 09 JUL 2026