

WAAS CH <b>69205</b> <b>W17A</b>	APP CRS <b>170°</b>	Rwy Ldg TDZE <b>763</b> Apt Elev <b>763</b>	<b>5000</b>
--	------------------------	---	-------------

# RNAV (GPS) RWY 17

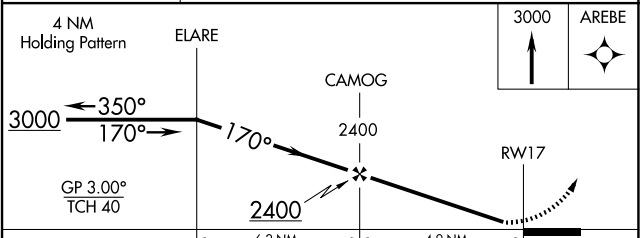
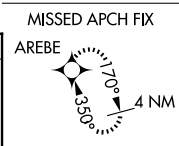
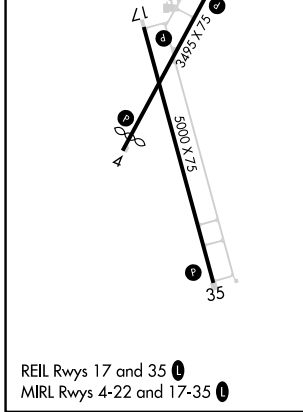
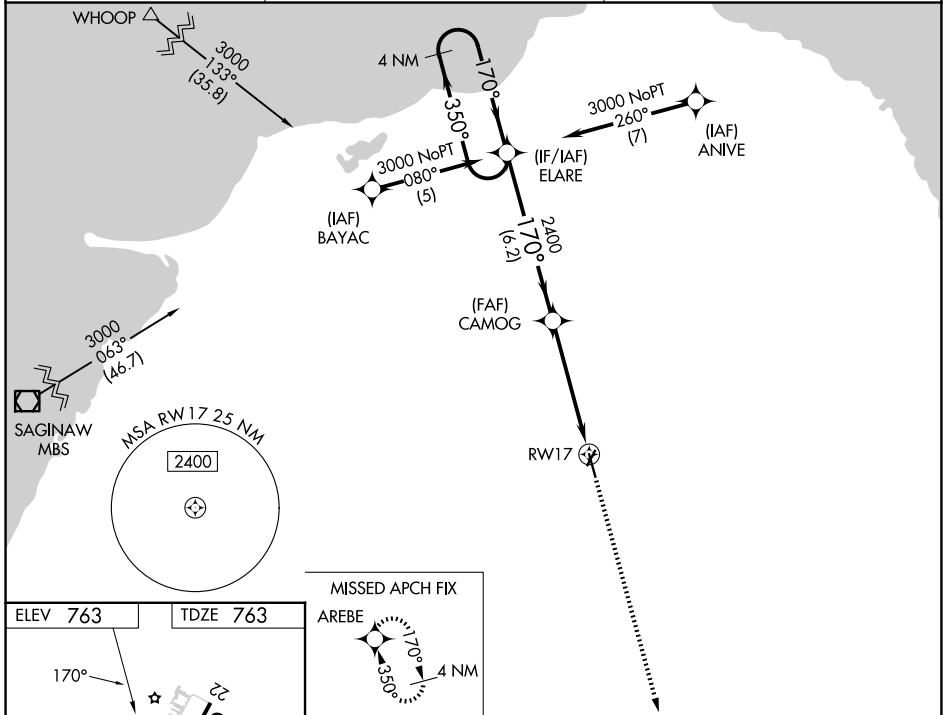
HURON COUNTY MEML (BAX)

RNP APCH.

Baro-VNAV NA when using MBS Intl altimeter setting. For uncompensated Baro-VNAV systems, LNAV/VNAV NA below -16°C or above 54°C. When local altimeter setting not received, use MBS Intl altimeter setting and increase all DA 129 feet and all MDA 140 feet, increase LPV all Cats visibility 3/8 mile; increase LNAV Cat C 1/2 mile. Rwy 17 helicopter visibility reduction below 3/4 SM NA.

MISSED APPROACH: Climb to 3000 direct AREBE and hold.

AWOS-3P <b>118.6</b>	CLEVELAND CENTER <b>127.7 290.425</b>	UNICOM <b>123.075 (CTAF) 0</b>
-------------------------	--	-----------------------------------



CATEGORY	A	B	C	D
LPV DA		1075-1 312 (400-1)		NA
LNAV/VNAV DA		1352-2 589 (600-2)		NA
LNAV MDA	1220-1	457 (500-1)	1220-1 1/4 457 (500-1 1/4)	NA

EC-1, 11 JUN 2026 to 09 JUL 2026

EC-1, 11 JUN 2026 to 09 JUL 2026