

WAAS CH 62805 W35A	APP CRS 350°	Rwy Ldg 5000 TDZE 756 Apt Elev 763
--	------------------------	---

RNAV (GPS) RWY 35

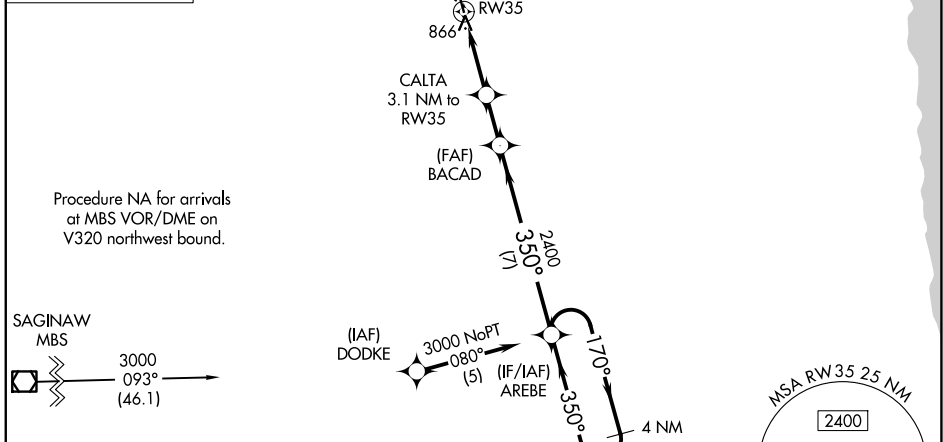
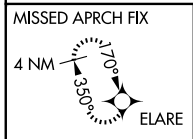
HURON COUNTY MEML (BAX)

RNP APCH.

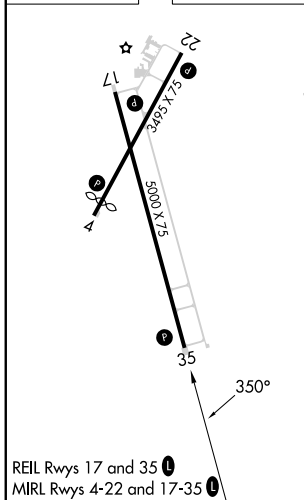
⚠ For uncompensated Baro-VNAV systems, LNAV/VNAV NA below -16°C or above 54°C. When local altimeter setting not received, use MBS Intl altimeter setting and increase all DA 129 feet and all MDA 140 feet; increase LPV all Cats and LNAV Cat C visibility 3/8 mile. Rwy 35 helicopter visibility reduction below 3/4 SM NA. VDP and Baro/VNAV NA when using MBS Intl altimeter setting.

MISSED APPROACH: Climb to 3000 direct ELARE and hold.

AWOS-3P 118.6	CLEVELAND CENTER 127.7 290.425	UNICOM 123.075 (CTAF) 0
-------------------------	--	-----------------------------------



ELEV 763	TDZE 756
----------	----------



3000	ELARE	VGSI and RNAV glidepath not coincident (VGSI Angle 3.00°/TCH 41).	4 NM Holding Pattern
*LNAV only	RW35	CALTA 3.1 NM to RW35	AREBE
	*1.1 NM to RW35	BACAD 2400	3000
		*1780	GP 3.00° TCH 40
	1.1 NM	2 NM	1.9 NM
			7 NM

CATEGORY	A	B	C	D
LPV DA	1113-1¼	357 (400-1¼)		NA
LNAV/VNAV DA	1154-1½	398 (400-1½)		NA
LNAV MDA	1520-1 764 (800-1)	1520-1¼ 764 (800-1¼)	1520-2½ 764 (800-2½)	NA