

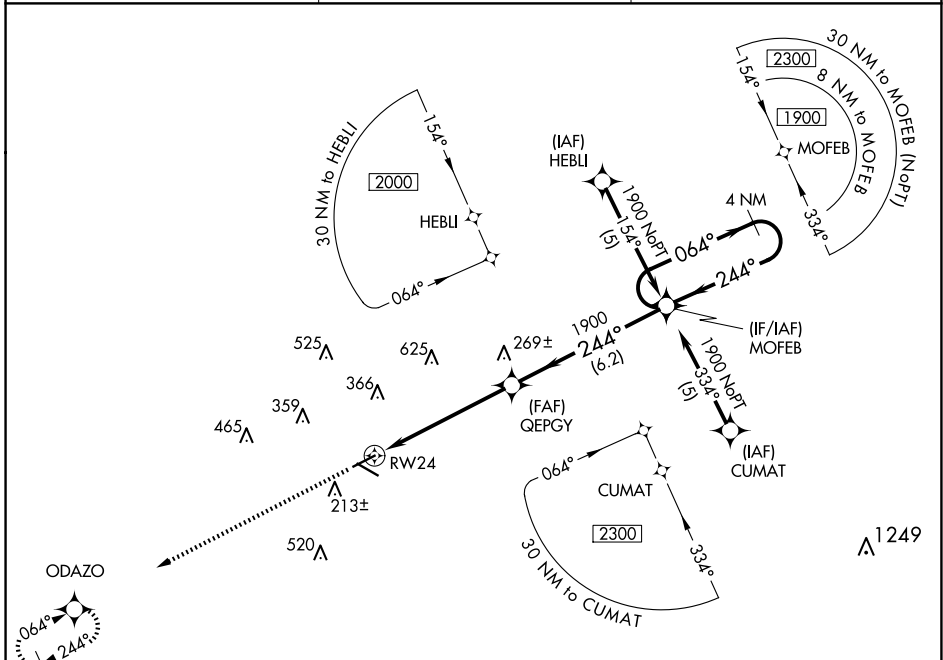
APP CRS	Rwy Idg	5136
244°	TDZE	83
	Apt Elev	99

RNAV (GPS) RWY 24

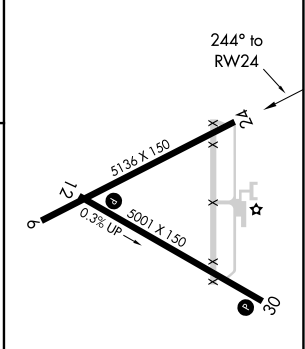
BREWTON MUNI (12J)

RNP APCH - GPS.		MISSED APPROACH: Climb to 2000 direct ODAZO and hold.
<p>▽ When local altimeter setting not received use Pensacola altimeter setting and increase all MDA 100 feet; increase LNAV Cats C and D visibility ¼ SM. Procedure NA at night.</p> <p>△ NA</p>		

AWOS-3PT 119.325	PENSACOLA APP CON 127.35 291.625	UNICOM 122.725 (CTAF)
----------------------------	--	---------------------------------



ELEV	99	TDZE	83
------	----	------	----



2000	ODAZO	Visual Segment - Obstacles.		4 NM Holding Pattern
↑	✧	QEGPY	MOFEB	
		1900	1900	
		244°	064°	
		←	→	
		5.5 NM	6.2 NM	

CATEGORY	A	B	C	D
LNAV MDA	520-1	437 (500-1)	520-1¼	437 (500-1¼)

MIRL Rwy 12-30

SE-4, 11 JUN 2026 to 09 JUL 2026

SE-4, 11 JUN 2026 to 09 JUL 2026