

WAAS CH 56316 W30A	APP CRS 301°	Rwy Idg 5001 TDZE 99 Apt Elev 99
--	------------------------	---

RNAV (GPS) RWY 30

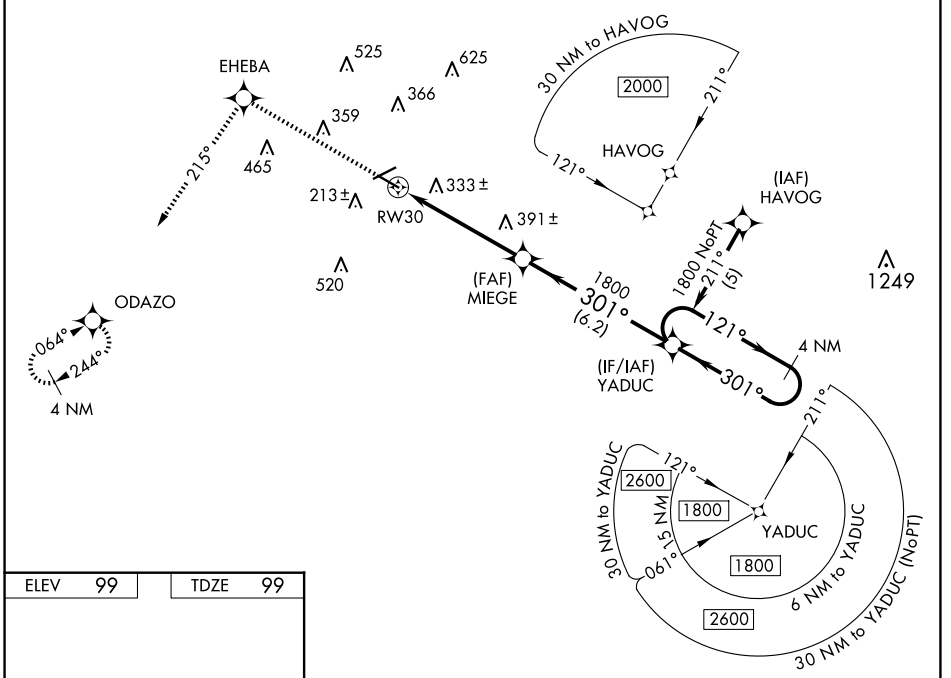
BREWTON MUNI (12J)

RNP APCH.

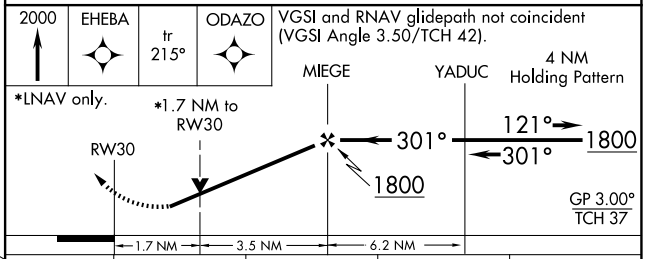
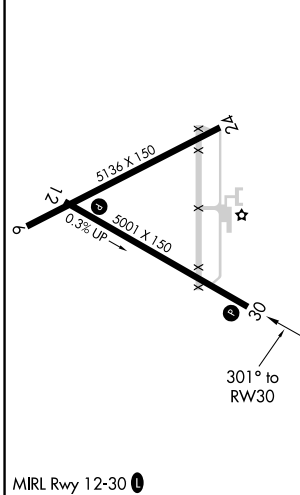
NA Baro-VNAV NA when using Pensacola altimeter setting. For uncompensated Baro-VNAV systems, LNAV/VNAV NA below -15°C or above 48°C. Rwy 30 helicopter visibility reduction below ¾ SM NA. When local altimeter setting not received, use Pensacola altimeter setting; increase LPV DA to 611 feet; increase LNAV/VNAV DA to 787 feet; increase all MDAs 100 feet; increase LPV all Cats, LNAV/VNAV all Cats and LNAV Cats C and D visibility ¼ SM. VDP NA when using Pensacola altimeter setting.

MISSED APPROACH: Climb to 2000 direct EHEBA and on track 215° to ODAZO and hold.

AWOS-3PT 119.325	PENSACOLA APP CON 127.35 291.625	UNICOM 122.725 (CTAF) 0
----------------------------	--	--



ELEV 99	TDZE 99
----------------	----------------



CATEGORY	A	B	C	D
LPV DA	527-1½		428 (500-1½)	
LNAV/VNAV DA	703-2¼		604 (700-2¼)	
LNAV MDA	660-1	561 (600-1)	660-1½ 561 (600-1½)	660-1¾ 561 (600-1¾)

SE-4, 11 JUN 2026 to 09 JUL 2026

SE-4, 11 JUN 2026 to 09 JUL 2026