

WAAS CH <b>86823</b> <b>W36A</b>	APP CRS <b>358°</b>	Rwy Ldg <b>5005</b> TDZE <b>140</b> Apt Elev <b>140</b>
--	------------------------	---

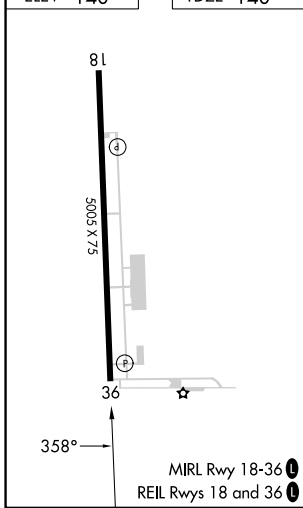
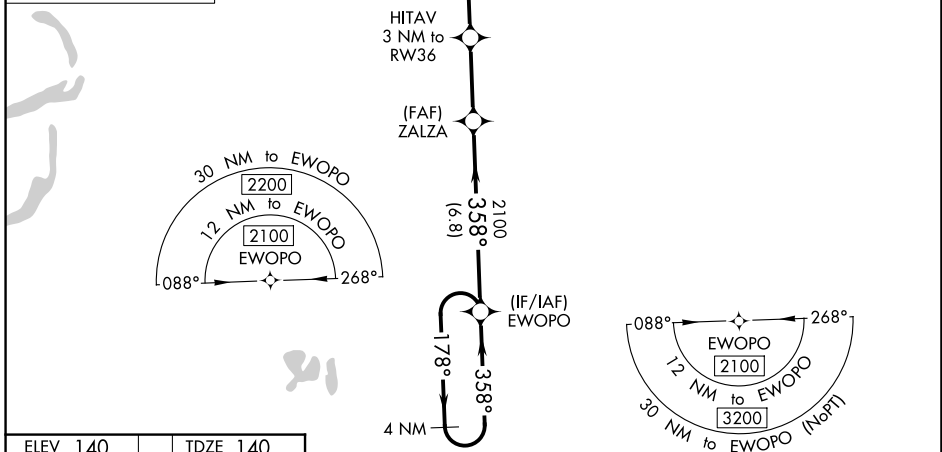
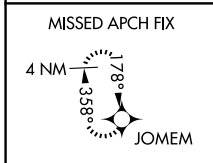
# RNAV (GPS) RWY 36

CLEVELAND MUNI (RNV)

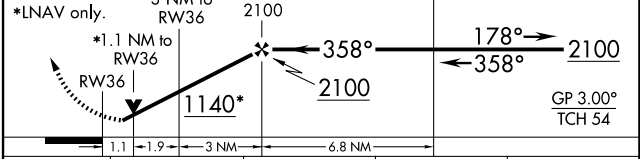
**⚠** For uncompensated Baro-VNAV systems, LNAV/VNAV NA below -1.5°C (5°F) or above 54°C (130°F). DME/DME RNP-0.3 NA. Baro-VNAV and VDP NA when using Greenville altimeter setting. When local altimeter setting not received, use Greenville altimeter setting and increase LPV DA to 438, LNAV/VNAV DA to 597, and all MDA 60 feet; increase LPV all Cats and LNAV Cats C/D visibility ¼ mile, and LNAV/VNAV all Cats visibility ½ mile. Rwy 36 helicopter visibility reduction below ¾ SM NA.

**⚠** MISSED APPROACH: Climb to 2100 direct JOMEM and hold.

AWOS-3PT <b>124.175</b>	MEMPHIS CENTER <b>135.875 269.35</b>	UNICOM <b>122.725 (CTAF) 0</b>
----------------------------	---	-----------------------------------



2100 JOMEM VGSi and RNAV glidepath not coincident (VGSi Angle 3.25/TCH 46).  
 HITAV 3 NM to RW36 ZALZA 2100 EWOP0 4 NM Holding Pattern



CATEGORY	A	B	C	D
LPV DA		390-3/4	250 (300-3/4)	
LNAV/VNAV DA		549-1 3/8	409 (500-1 3/8)	
LNAV MDA		520-1	380 (400-1)	
CIRCLING	600-1	460 (500-1)	900-2 1/4 760 (800-2 1/4)	900-2 1/2 760 (800-2 1/2)

SC-4, 11 JUN 2026 to 09 JUL 2026

SC-4, 11 JUN 2026 to 09 JUL 2026