

WAAS CH <b>86501</b> <b>W18A</b>	APP CRS <b>185°</b>	Rwy Ldg <b>6500</b> TDZE <b>740</b> Apt Elev <b>764</b>
--	------------------------	---

# RNAV (GPS) RWY 18

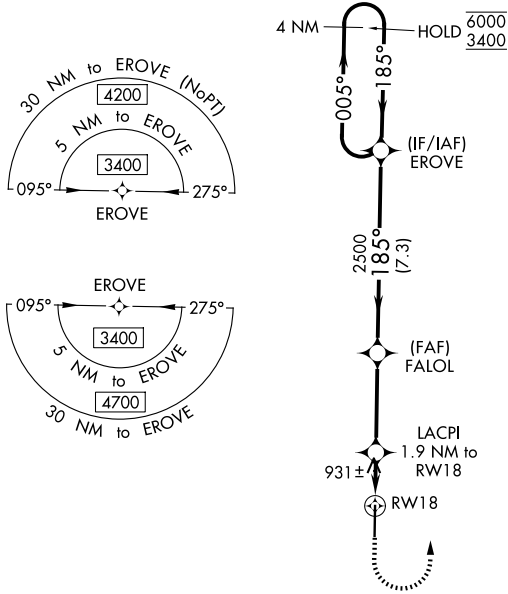
HUNTSVILLE EXEC TOM SHARP JR FLD (MDQ)

RNP APCH.

**▽** Rwy 18 helicopter visibility reduction below ¾ SM NA.  
**▲** For uncompensated Baro-VNAV systems, procedure NA below -16°C or above 54°C.

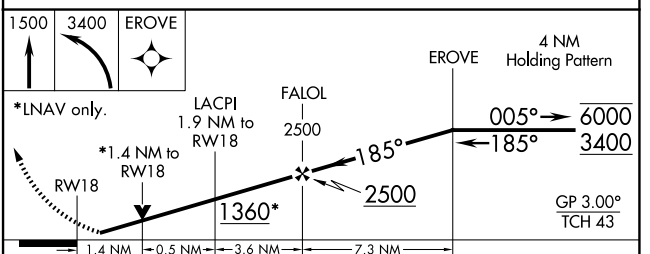
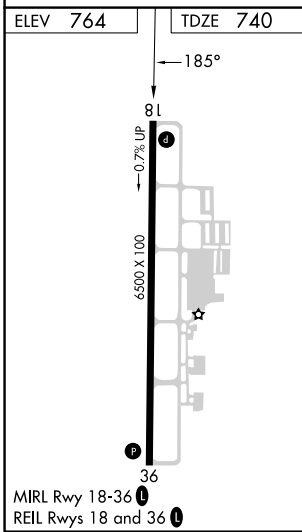
MISSED APPROACH: Climb to 1500 then climbing left turn to 3400 direct EROVE and hold.

AWOS-3PT <b>120.0</b>	HUNTSVILLE APP CON * <b>125.6 354.1</b>	GCO <b>121.725</b>	UNICOM <b>123.0 (CTAF) 0</b>
--------------------------	--	-----------------------	---------------------------------



SE-4, 11 JUN 2026 to 09 JUL 2026

SE-4, 11 JUN 2026 to 09 JUL 2026



CATEGORY	A	B	C	D
LPV DA		940-¾	200 (200-¾)	
LNAV/VNAV DA		1250-1¾	510 (500-1¾)	
LNAV MDA	1200-1	460 (500-1)	1200-1¾	460 (500-1¾)
CIRCLING	1260-1	496 (500-1)	1560-2¼ 796 (800-2¼)	2000-3 1236 (1300-3)