

| | | |
|--|------------------------|---|
| WAAS CH 93623 W31A | APP CRS 316° | Rwy Idg 4400 TDZE 660 Apt Elev 660 |
|--|------------------------|---|

RNAV (GPS) RWY 31

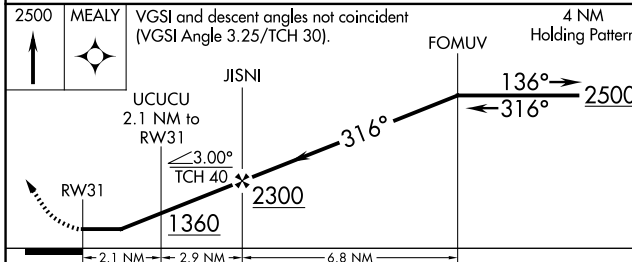
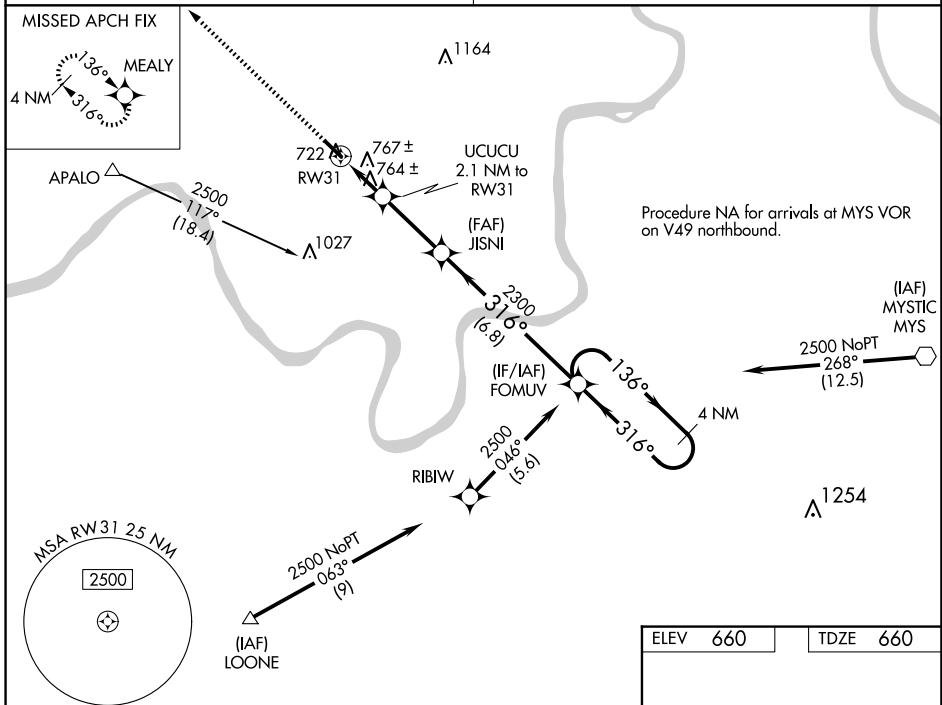
PERRY COUNTY MUNI (TEL)

NA When VGSI inop, Circling Rwy 13 NA at night. When VGSI inop, Straight-in/Circling Rwy 31 procedure NA at night. DME/DME RNP-0.3 NA. Visibility reduction by helicopters NA. Obtain local altimeter setting on CTAF; when not received, use Huntingburg altimeter setting and increase all MDA 80 feet and increase LP and LNAV Cat C visibility 1/4 mile.

MISSED APPROACH:
Climb to 2500 direct MEALY and hold.

EVANSVILLE APP CON *
124.025 290.9

UNICOM
122.7 (CTAF) 0



| | |
|--|----------|
| ELEV 660 | TDZE 660 |
| | |
| REIL Rwy 13 and 31 0 MIRL Rwy 13-31 0 | |

| CATEGORY | A | B | C | D |
|----------|-----------------------|-----------------------|-------------------------|----|
| LP MDA | | 1020-1 360 (400-1) | | NA |
| LNAV MDA | | 1020-1 360 (400-1) | | NA |
| CIRCLING | 1080-1 420 (500-1) | 1120-1 460 (500-1) | 1120-1½ 460 (500-1½) | NA |

EC-2, 11 JUN 2026 to 09 JUL 2026

EC-2, 11 JUN 2026 to 09 JUL 2026