

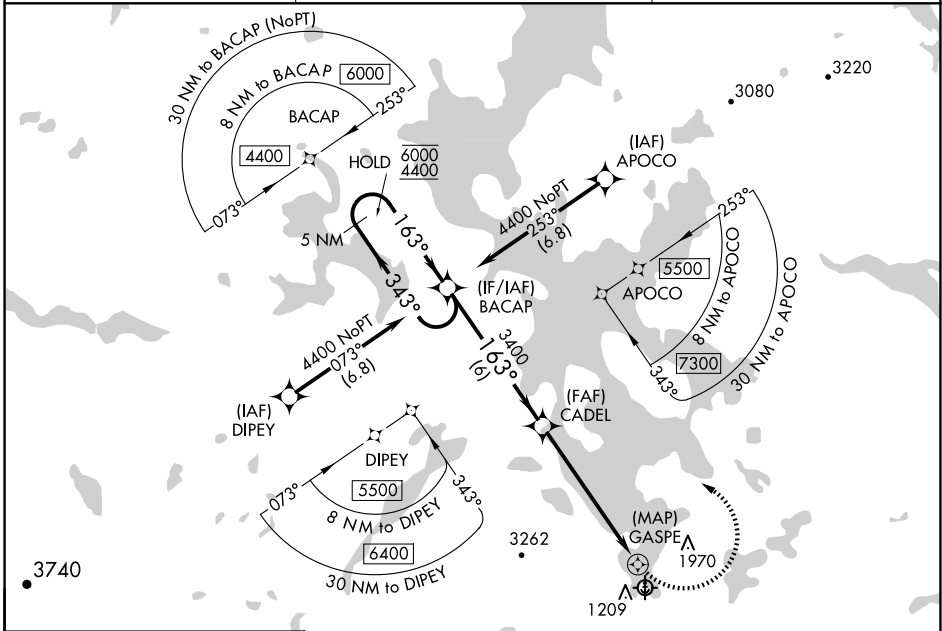
APP CRS	Rwy Ldg	N/A
163°	TDZE	N/A
	Apt Elev	1028

# RNAV (GPS)-B

MOOSEHEAD AERO MARINE (52B)

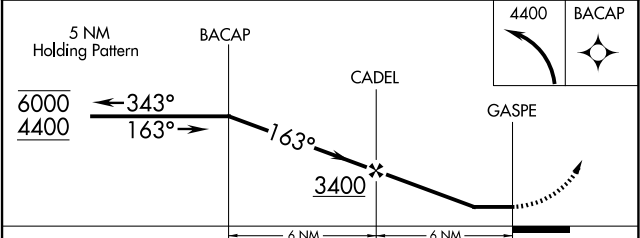
RNP APCH - GPS.	MISSED APPROACH: Climbing left turn to 4400 direct BACAP and hold.
<p>▼ Procedure NA at night. Use 3B1 altimeter setting; when not received, use BGR altimeter setting and increase all MDA 240 feet.</p> <p>▲ NA</p> <p>❄ -21°C</p>	

3B1 AWOS-A <b>124.175</b>	BOSTON CENTER <b>120.25 346.4</b>	CTAF <b>122.9</b>
------------------------------	--------------------------------------	----------------------



ELEV 1028

SEE MOOSEHEAD AERO MARINE SEAPLANE BASE LANDING CHART



CATEGORY	A	B	C	D
CIRCLING	2140-1¼ 1112 (1200-1¼)	2560-1½ 1532 (1600-1½)	2560-3 1532 (1600-3)	NA

NE-1, 11 JUN 2026 to 09 JUL 2026

NE-1, 11 JUN 2026 to 09 JUL 2026

24249

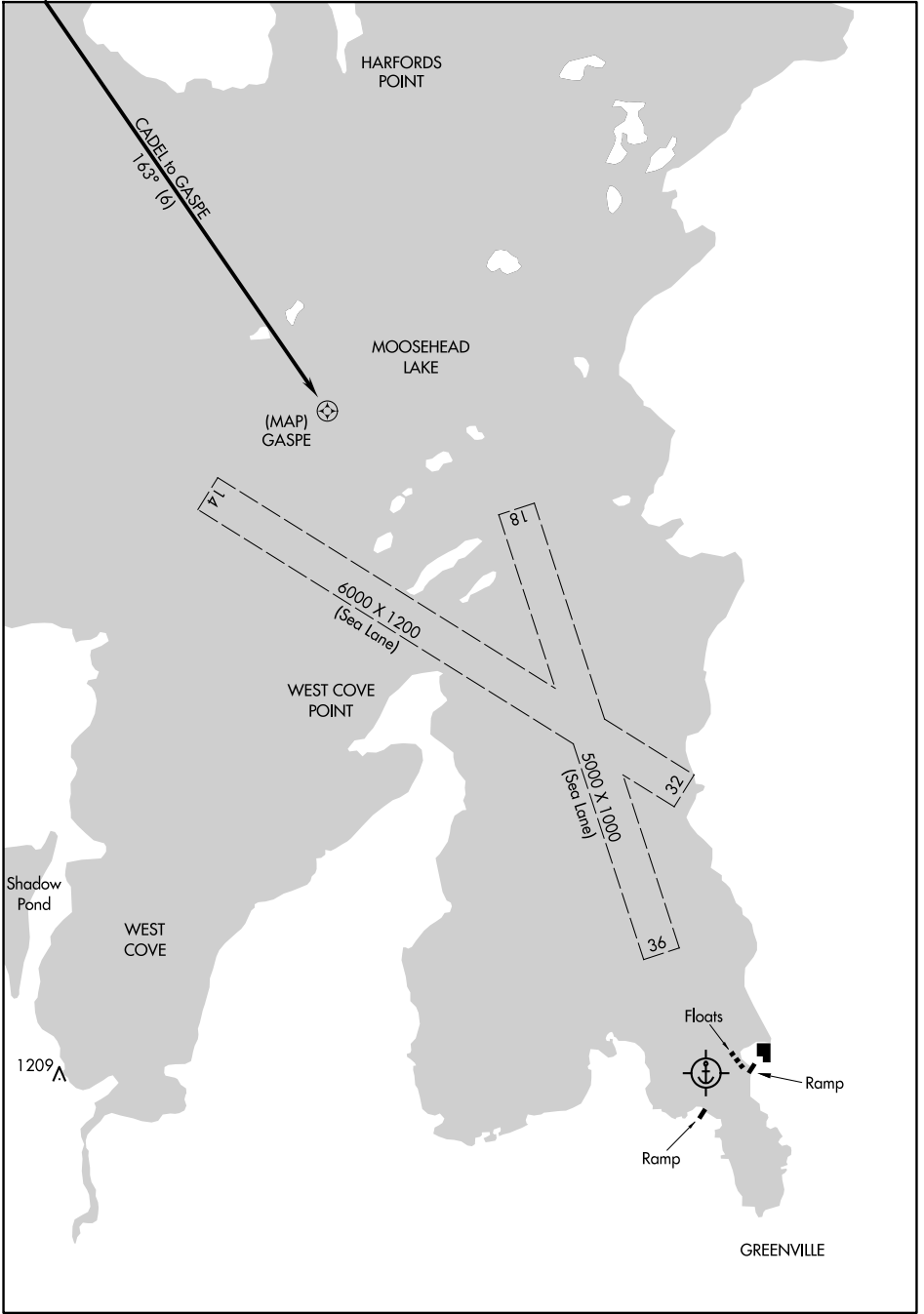
# RNAV (GPS) -B LANDING

AL-5935 (FAA)

MOOSEHEAD AERO MARINE (52B)  
GREENVILLE, MAINE

NE-1, 11 JUN 2026 to 09 JUL 2026

NE-1, 11 JUN 2026 to 09 JUL 2026



# RNAV (GPS) -B LANDING

45°28'N-69°36'W

GREENVILLE, MAINE  
MOOSEHEAD AERO MARINE (52B)

Amdt 1A 05SEP24