

RNAV 1 - DME/DME/IRU or GPS required.

RADAR required.

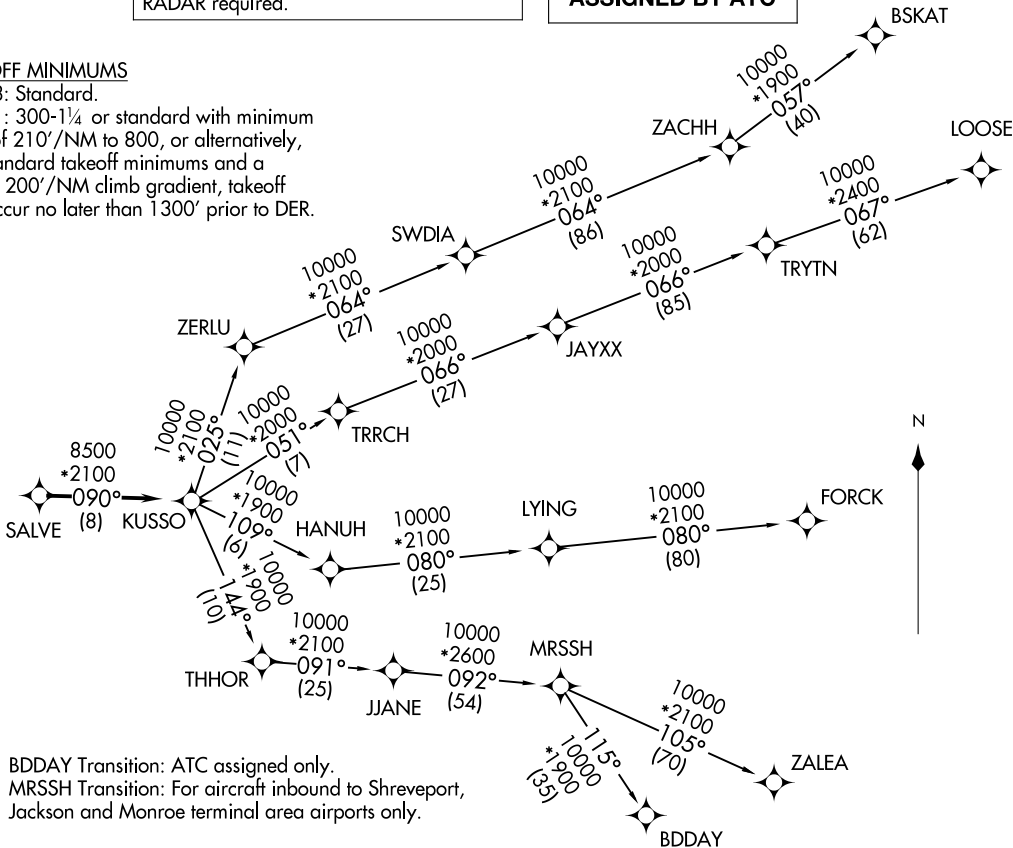
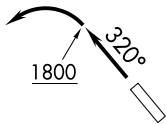
**TOP ALTITUDE:  
ASSIGNED BY ATC**

**TAKEOFF MINIMUMS**

Rwy 13: Standard.  
Rwy 31: 300-1¼ or standard with minimum climb of 210'/NM to 800, or alternatively, with standard takeoff minimums and a normal 200'/NM climb gradient, takeoff must occur no later than 1300' prior to DER.

**KUSSO THREE DEPARTURE (RNAV)**  
(KUSSO3.KUSSO) 14MAY26

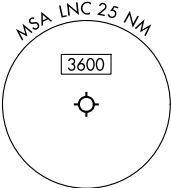
LONE STAR DEP CON  
125.2 343.65  
CTAF  
122.7



NOTE: BDDAY Transition: ATC assigned only.  
NOTE: MRSSH Transition: For aircraft inbound to Shreveport, Jackson and Monroe terminal area airports only.

(CONTINUED ON FOLLOWING PAGE)

NOTE: Chart not to scale.



LANCASTER, TEXAS  
LANCASTER RGNL (LNC)

(KUSSO3.KUSSO) 26134  
**KUSSO THREE DEPARTURE (RNAV)**

AL-5936 (FAA)

LANCASTER RGNL (LNC)  
LANCASTER, TEXAS

# KUSSO THREE DEPARTURE (RNAV)



## DEPARTURE ROUTE DESCRIPTION

TAKEOFF RUNWAY 31: Climb on heading 320° to 1800 before turning left.

When entering controlled airspace, fly heading assigned by ATC, expect RADAR vectors to SALVE, then on track 090° to KUSSO, then on assigned transition. Maintain ATC assigned altitude, expect filed altitude 10 minutes after departure.

- BDDAY TRANSITION (KUSSO3.BDDAY)
- BSKAT TRANSITION (KUSSO3.BSKAT)
- FORCK TRANSITION (KUSSO3.FORCK)
- LOOSE TRANSITION (KUSSO3.LOOSE)
- MRSSH TRANSITION (KUSSO3.MRSSH)
- ZALEA TRANSITION (KUSSO3.ZALEA)

SC-2, 11 JUN 2026 to 09 JUL 2026

SC-2, 11 JUN 2026 to 09 JUL 2026