

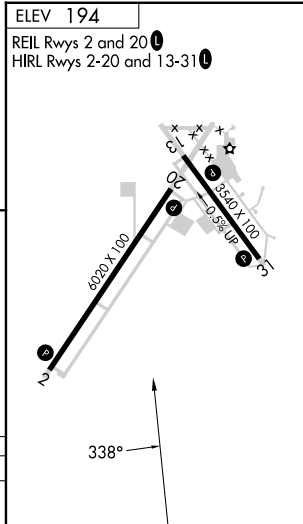
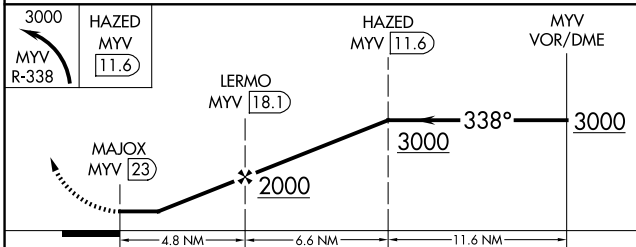
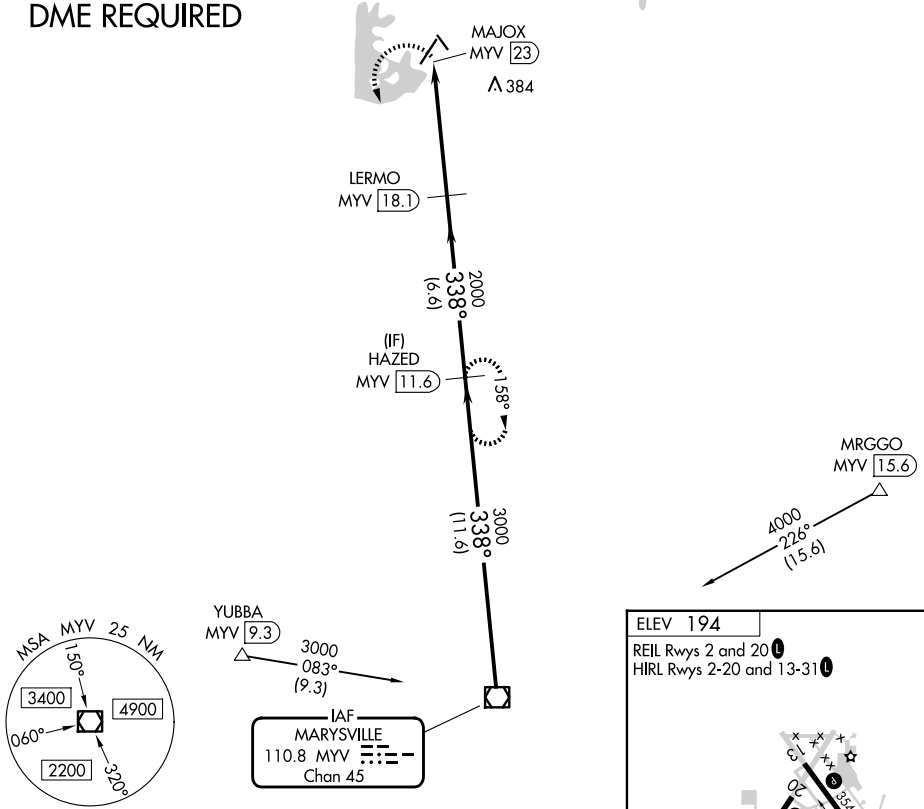
VOR/DME MYV 110.8 Chan 45	APP CRS 338°	Rwy Ldg TDZE Apt Elev N/A N/A 194
---	------------------------	--

VOR-A
OROVILLE MUNI (OVE)

<p>▼ Circling NA northeast of Rwy 13-31. DME required.</p>	<p>MISSED APPROACH: Climbing left turn to 3000 on MYV VOR/DME R-338 to HAZED/MYV 11.6 DME and hold.</p>
---	---

<p>ASOS 121.425</p>	<p>NORCAL APP CON 125.4 259.1</p>	<p>UNICOM 122.8 (CTAF) 0</p>
--------------------------------	--	---

DME REQUIRED



CATEGORY	A	B	C	D
CIRCLING	840-1	646 (700-1)	840-1¾ 646 (700-1¾)	840-2 646 (700-2)

SW-2, 11 JUN 2026 to 09 JUL 2026

SW-2, 11 JUN 2026 to 09 JUL 2026