

WAAS CH <b>87036</b> W34A	APP CRS <b>335°</b>	Rwy Ldg 4997 TDZE 83 Apt Elev 83
---------------------------------	------------------------	---

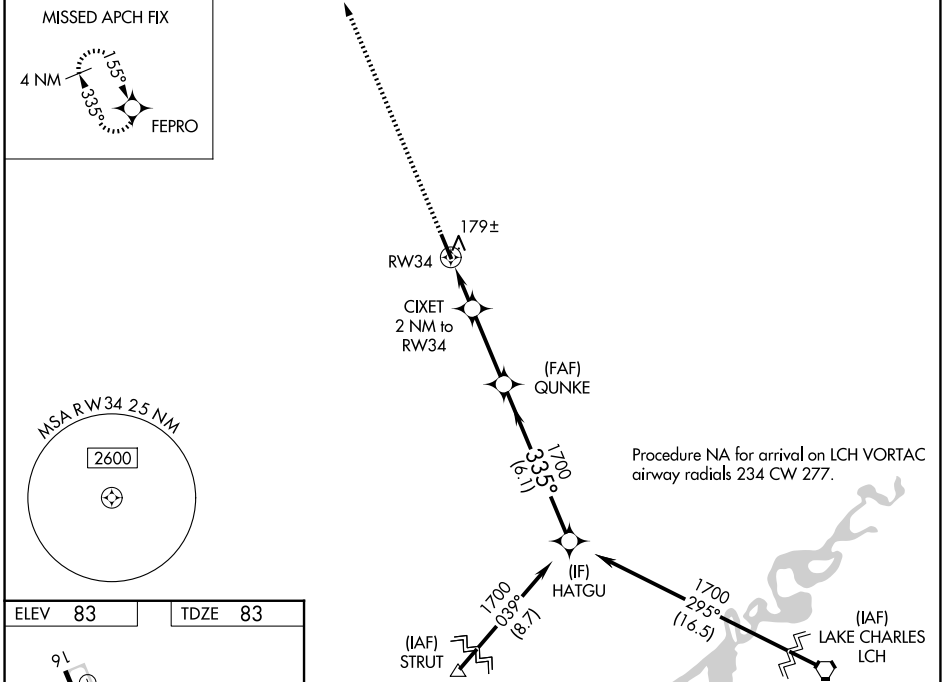
# RNAV (GPS) RWY 34

DE QUINCY INDUSTRIAL AIRPARK (5R.8)

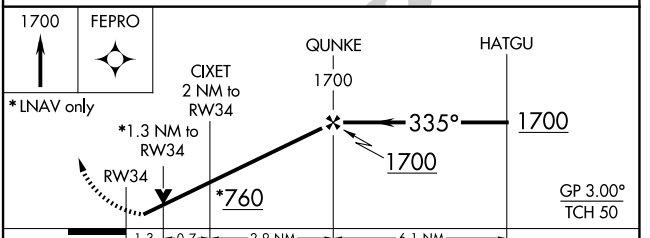
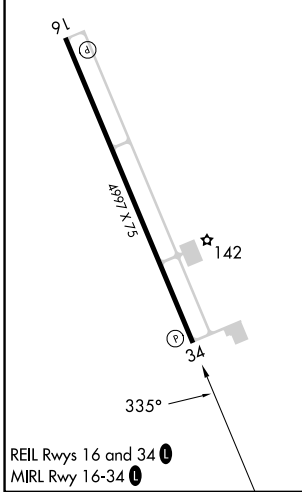
**NA** For uncompensated Baro-VNAV systems, LNAV/VNAV NA below -1.5°C (5°F) or above 54°C (130°F). DME/DME RNP-0.3 NA. Helicopter visibility reduction below 3/4 SM NA. When local altimeter setting not received, use Sulphur altimeter setting and increase all DA 55 feet and MDA 60 feet, increase LPV and LNAV/VNAV visibility all Cats 1/4, LNAV and Circling Cat C visibility 3/8 mile. Baro-VNAV and VDP NA with Sulphur altimeter setting. Night landing Rwy 16 NA.

MISSED APPROACH: Climb to 1700 direct FEPRO and hold.

AWOS-3PT <b>121.2</b>	LAKE CHARLES APP CON ★ <b>119.35 282.3</b>	UNICOM <b>122.8 (CTAF) ①</b>
--------------------------	---	---------------------------------



ELEV 83	TDZE 83
---------	---------



CATEGORY	A			B		C		D
	1	2	3	1	2	1	2	
LPV DA	339-3/4			256 (300-3/4)				NA
LNAV/VNAV DA	333-3/4			250 (300-3/4)				NA
LNAV MDA	540-1		457 (500-1)		540-1 3/8		457 (500-1 3/8)	NA
CIRCLING	540-1		740-1		740-1 3/4		657 (700-1 3/4)	NA
	457 (500-1)		657 (700-1)		657 (700-1 3/4)			

SC-4, 11 JUN 2026 to 09 JUL 2026

SC-4, 11 JUN 2026 to 09 JUL 2026