

RADAR and DME required.

**TOP ALTITUDE:  
ASSIGNED BY ATC**

MIAMI DEP CON  
 (For AARPS, BNICE, DORRL, FRSBE, HROCK, ZFP Transitions)  
 126.05 251.1  
 (For BEECH-FLL Departing E, MAYNR Transition)  
 126.85 290.325  
 (For BEECH-FLL Departing W)  
 126.05 251.1  
 ATIS  
 119.85  
 GND CON  
 121.75  
 CLNC DEL  
 127.95  
 EXECUTIVE TOWER  
 120.9 239.3

PALM BEACH  
 115.7 PBI  
 Chan 104

FREEPORT  
 113.2 ZFP  
 Chan 79

FORT LAUDERDALE  
 114.4 FLL  
 Chan 91

DOLPHIN  
 113.9 DHP  
 Chan 86

BIMINI  
 116.7 ZBV  
 Chan 114

LEE COUNTY  
 114.15 RSW  
 Chan 88 (Y)

TAKEOFF MINIMUMS  
 Rwy 9, 13, 27, 31: Standard.

NOTE: Turbojet aircraft accelerate to 250K within 7 NM of departure, if unable advise ATC.

(CONTINUED ON FOLLOWING PAGE)

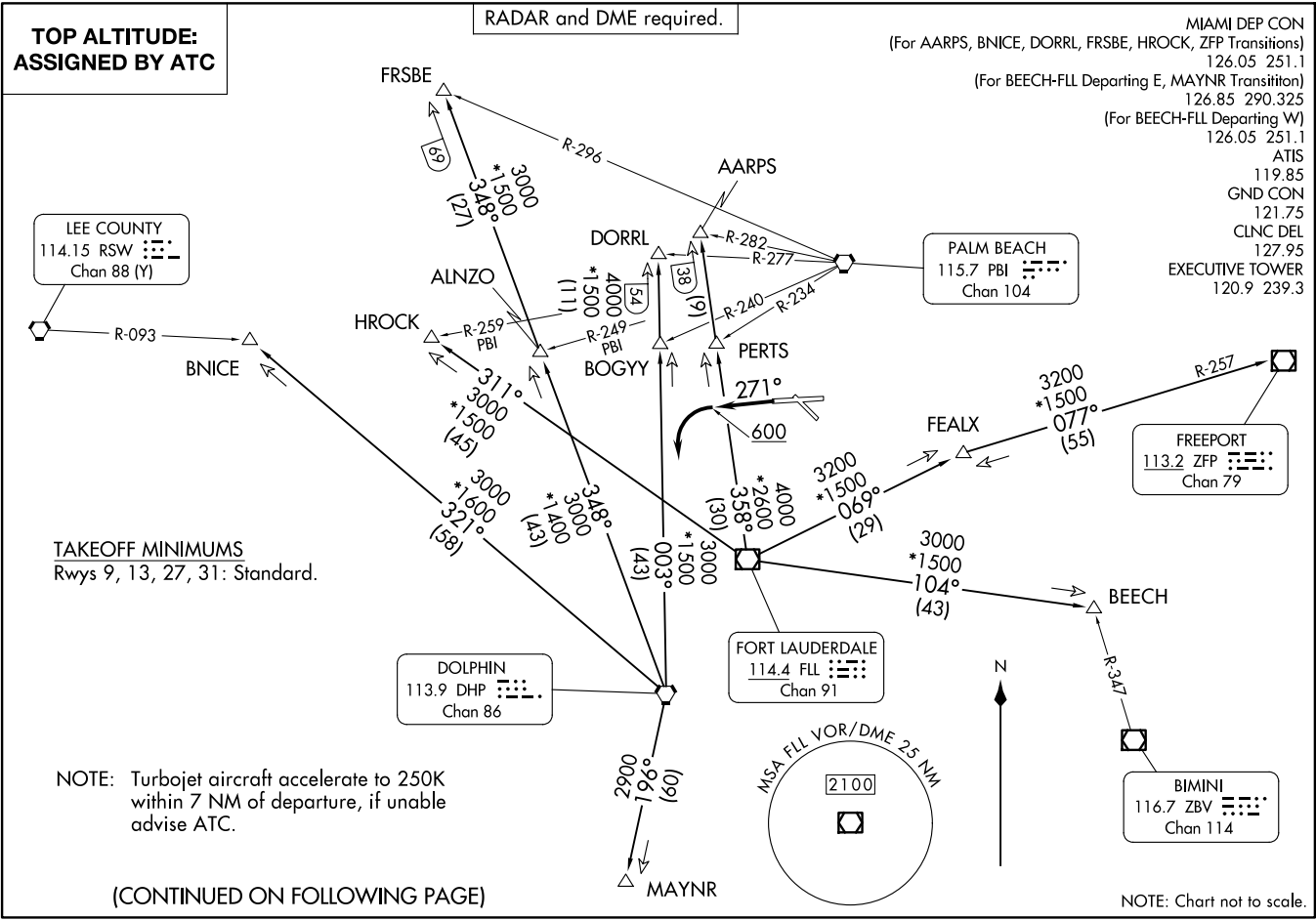
NOTE: Chart not to scale.

FORT LAUDERDALE TWO DEPARTURE  
(FL12.FLL) 26DEC24

FORT LAUDERDALE, FLORIDA  
FORT LAUDERDALE EXEC (FXXE)

(FL12.FLL) 28331  
AL-5942 (FAAN)  
FORT LAUDERDALE TWO DEPARTURE

FORT LAUDERDALE EXEC (FXXE)  
FORT LAUDERDALE, FLORIDA



# FORT LAUDERDALE TWO DEPARTURE



## DEPARTURE ROUTE DESCRIPTION

TAKEOFF RUNWAYS 9, 13, 31: Climb on assigned heading, thence. . . .

TAKEOFF RUNWAY 27: Climb on heading 271° to 600 before turning left, then climb on assigned heading, thence. . . .

. . . .maintain ATC assigned altitude, expect RADAR vectors to appropriate transition. Expect further clearance to filed altitude ten (10) minutes after departure.

AARPS TRANSITION (FLL2.AARPS): From over FLL VOR/DME on FLL R-358 to AARPS.

BEECH TRANSITION (FLL2.BEECH): From over FLL VOR/DME on FLL R-104 to BEECH.

BNICE TRANSITION (FLL2.BNICE): From over DHP VORTAC on DHP R-321 to BNICE.

DORRL TRANSITION (FLL2.DORRL): From over DHP VORTAC on DHP R-003 to DORRL.

FEALX TRANSITION (FLL2.FEALX): From over FLL VOR/DME on FLL R-069 to FEALX.

FREEPORT TRANSITION (FLL2.ZFP): From over FLL VOR/DME on FLL R-069 to FEALX, then on ZFP R-257 to ZFP VOR/DME.

FRSBE TRANSITION (FLL2.FRSBE): From over DHP VORTAC on DHP R-348 to FRSBE.

HROCK TRANSITION (FLL2.HROCK): From over FLL VOR/DME on FLL R-311 to HROCK.

MAYNR TRANSITION (FLL2.MAYNR): From over DHP VORTAC on DHP R-196 to MAYNR.

SE-3, 11 JUN 2026 to 09 JUL 2026

SE-3, 11 JUN 2026 to 09 JUL 2026