

| | | |
|--|------------------------|---|
| WAAS CH 50319 W27A | APP CRS 271° | Rwy Ldg TDZE 13 Apt Elev 13 |
|--|------------------------|---|

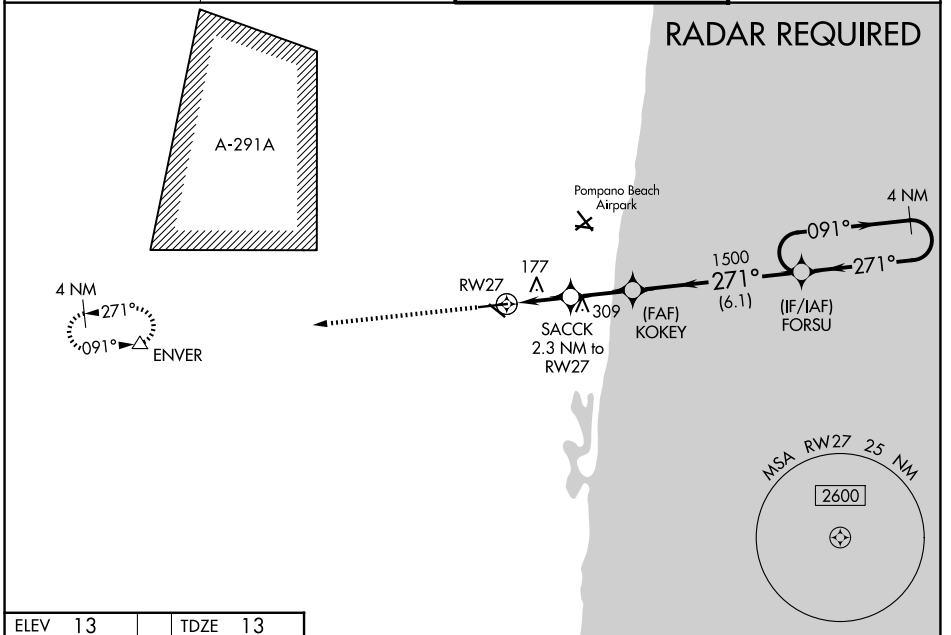
RNAV (GPS) RWY 27

FORT LAUDERDALE EXEC (FXE)

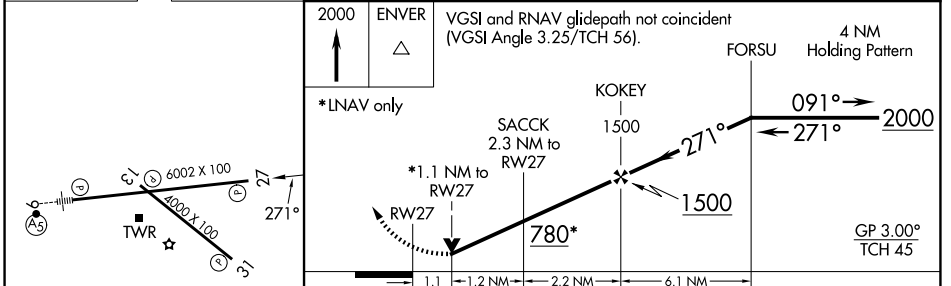
⚠ For uncompensated Baro-VNAV systems, LNAV/VNAV NA below 4°C (40°F) or above 54°C (130°F).
⚠ DME/DME RNP-0.3 NA. When local altimeter setting not received, use Fort Lauderdale/Hollywood Intl altimeter setting and increase LPV DA to 414; LNAV/VNAV DA to 468. Increase all MDA 20 feet and increase LPV all Cats and LNAV Cats C/D visibility to 1 $\frac{3}{8}$. Baro-VNAV and VDP NA when using Fort Lauderdale/Hollywood Intl altimeter setting. Helicopter visibility reduction below $\frac{3}{4}$ SM NA.

MISSED APPROACH: Climb to 2000 direct ENVER and hold.

| | | | |
|-----------------------|-------------------------------------|---------------------------------------|--------------------------|
| ATIS 119.85 | MIAMI APP CON 119.7 306.3 | EXECUTIVE TOWER 120.9 239.3 | GND CON 121.75 |
|-----------------------|-------------------------------------|---------------------------------------|--------------------------|



| | |
|---------|---------|
| ELEV 13 | TDZE 13 |
|---------|---------|



| CATEGORY | A | B | C | D |
|--------------|----------------------|----------------------|---|---|
| LPV DA | | 396-1 $\frac{1}{4}$ | 383 (400-1 $\frac{1}{4}$) | |
| LNAV/VNAV DA | | 450-1 $\frac{1}{2}$ | 437 (500-1 $\frac{1}{2}$) | |
| LNAV MDA | 440-1 | 427 (500-1) | 440-1 $\frac{1}{4}$ | 427 (500-1 $\frac{1}{4}$) |
| CIRCLING | 520-1 507 (600-1) | 620-1 607 (700-1) | 780-2 $\frac{1}{4}$ 767 (800-2 $\frac{1}{4}$) | 780-2 $\frac{1}{2}$ 767 (800-2 $\frac{1}{2}$) |

HIRL Rwy 9-27
 MIRL Rwy 13-31
 REIL Rwy 13, 27 and 31

SE-3, 11 JUN 2026 to 09 JUL 2026

SE-3, 11 JUN 2026 to 09 JUL 2026