

WAAS CH 86502 W11A	APP CRS 107°	Rwy Ldg TDZE 145 Apt Elev 146	4001
--	------------------------	---	-------------

RNAV (GPS) RWY 11

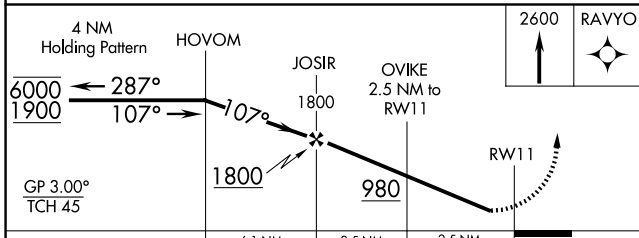
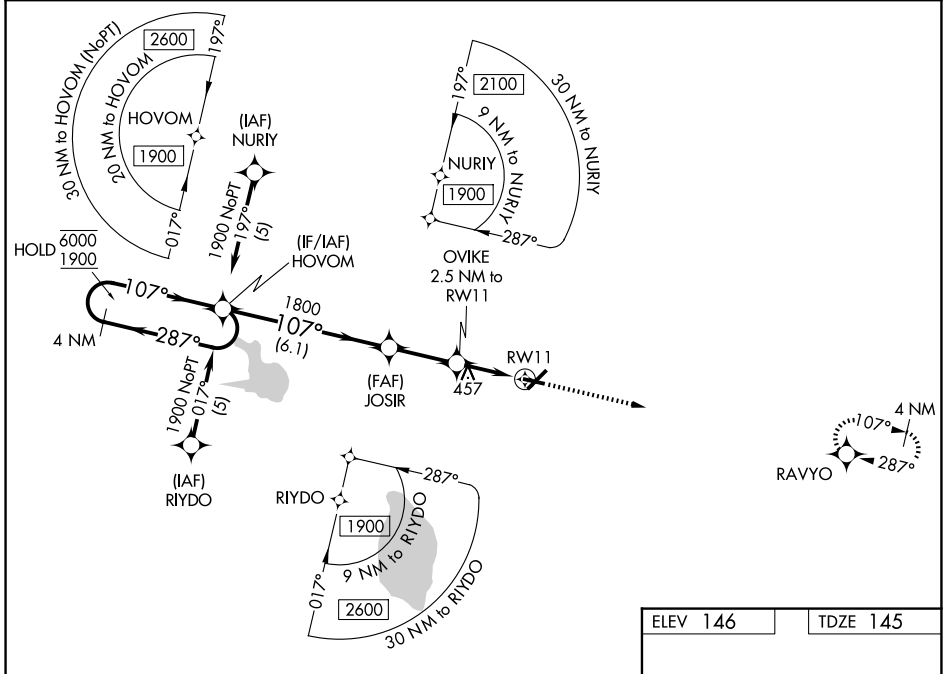
WINTER HAVEN RGNL (GIF')

RNP APCH-GPS.

▼ Rwy 11 helicopter visibility reduction below 1 SM NA. Baro-VNAV NA when using Bartow altimeter setting. For uncompensated Baro-VNAV systems, LNAV/VNAV NA below 3°C or above 54°C. When local altimeter setting not received, use Bartow altimeter setting and increase LPV DA to 415 feet; increase LNAV/VNAV DA to 667 feet and all visibilities ½ SM; increase all MDAs 20 feet. Straight-in Rwy 11 NA at night, Circling Rwy 5, 11, 29 NA at night.

MISSED APPROACH:
Climb to 2600 direct RAVYO and hold.

ASOS 133.675	TAMPA APP CON 120.65 290.3	GCO 121.725	UNICOM 123.05 (CTAF) 0
------------------------	--------------------------------------	-----------------------	----------------------------------



ELEV 146	TDZE 145
----------	----------

Diagram of RWY 11 showing dimensions: 4001 X 60 and 5005 X 100. Includes runway numbers 11 and 29.

REIL Rws 5 and 23
REIL Rws 11 and 29
MIRL Rwy 5-23 and 11-29

CATEGORY	A	B	C	D
LPV DA	395-1 250 (300-1)			
LNAV/VNAV DA	647-1 502 (600-1 3/8)			
LNAV MDA	760-1	615 (700-1)	760-1 3/4	615 (700-1 3/4)
CIRCLING	760-1	614 (700-1)	820-2 674 (700-2)	960-2 3/4 814 (900-2 3/4)

SE-3, 11 JUN 2026 to 09 JUL 2026

SE-3, 11 JUN 2026 to 09 JUL 2026