

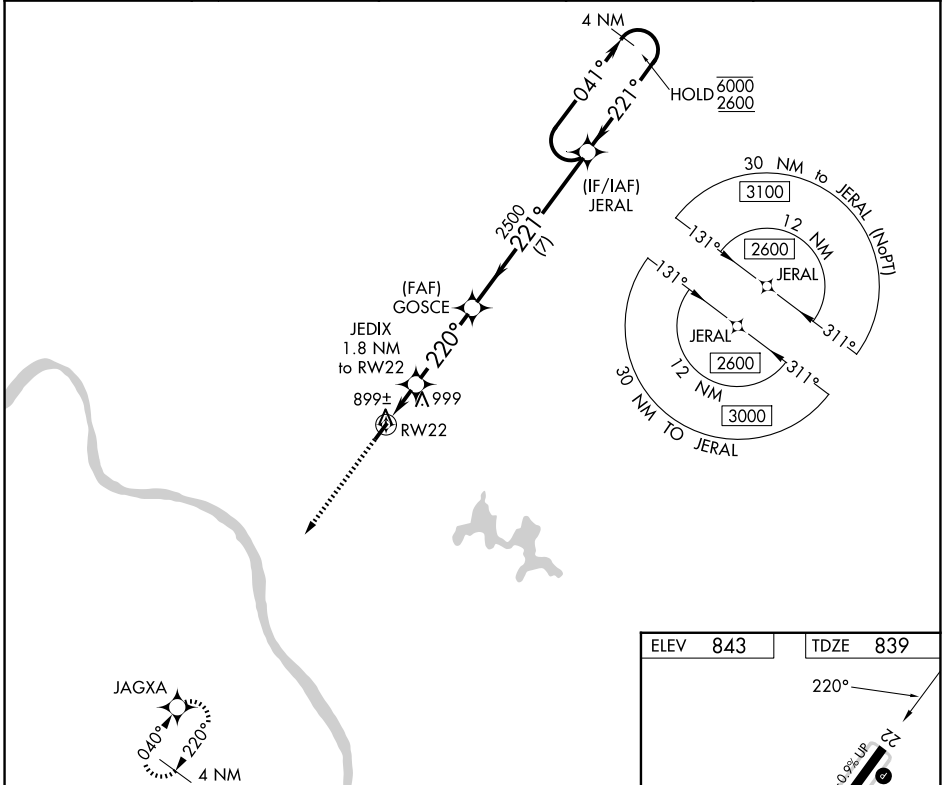
WAAS CH 82227 W22A	APP CRS 220°	Rwy Ldg TDZE Apt Elev	3567 839 843
--	------------------------	-----------------------------	---

RNAV (GPS) RWY 22

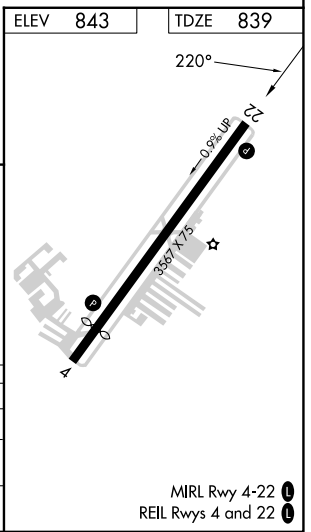
CLERMONT COUNTY (I69)

RNP APCH.	MISSED APPROACH: Climb to 2500 direct JAGXA and hold.
<p>▼ Circling Rwy 4 NA at night. ▲ Rwy 22 helicopter visibility reduction below 1 SM NA.</p>	

AWOS-3 127.275	CINCINNATI APP CON 121.0 254.25	CLNC DEL 124.9	UNICOM 122.975 (CTAF) ①
--------------------------	---	--------------------------	-----------------------------------



2500	JAGXA	Visual Segment - Obstacles.	JERAL	4 NM Holding Pattern
↑	✧			
		JEDIX 1.8 NM to RW22	GOSCE	041° → 6000 ← 221° 2600
		RW22		
		1.8	3.4 NM	7 NM
CATEGORY	A	B	C	D
LP MDA		1160-1	321 (400-1)	NA
LNAV MDA	1240-1	401 (400-1)	1240-1 1/8 401 (400-1 1/8)	NA
CIRCLING	1320-1 477 (500-1)	1360-1 517 (600-1)	1520-2 677 (700-2)	NA



EC-2, 11 JUN 2026 to 09 JUL 2026

EC-2, 11 JUN 2026 to 09 JUL 2026