

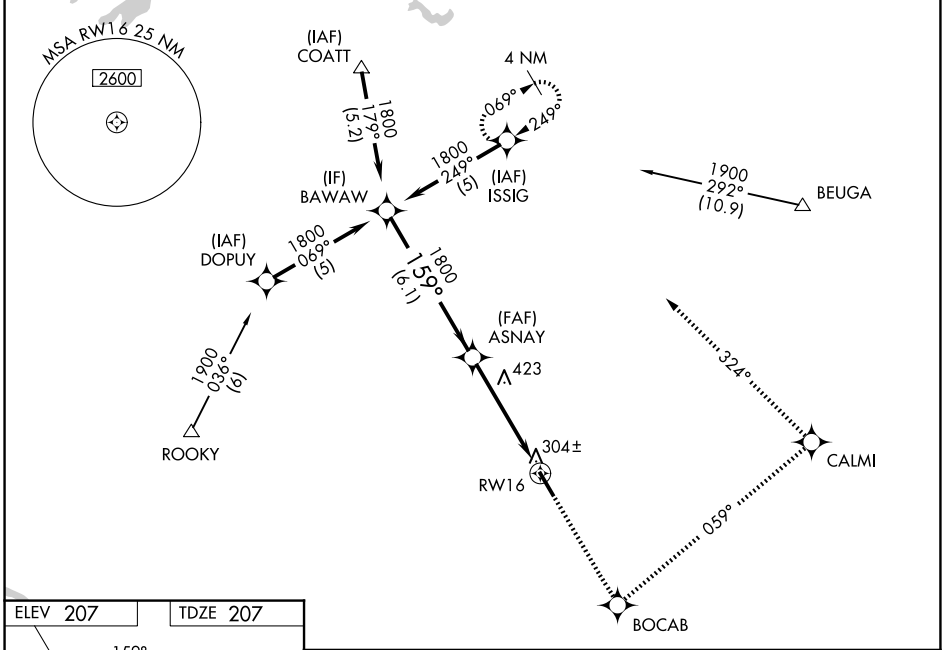
WAAS CH 42904 W16A	APP CRS 159°	Rwy Ldg TDZE Apt Elev	5402 207 207
--	------------------------	-----------------------------	---

RNAV (GPS) RWY 16

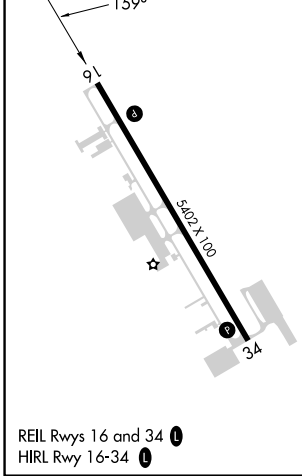
HANOVER COUNTY MUNI (OFP)

RNP APCH.	MISSED APPROACH: Climb to 2000 direct BOCAB and left turn via 059° track to CALMI and left turn via 324° track to ISSIG and hold.
<p>⚠ When local altimeter setting not received, use Richmond Intl altimeter setting and increase all DA 37 feet and all MDA 40 feet; increase LNAV/VNAV all Cats and LNAV Cats C/D visibility ¼ mile. Baro-VNAV NA when using Richmond Intl altimeter setting. For uncompensated Baro-VNAV systems LNAV/VNAV NA below -15°C or above 54°C. Rwy 16 helicopter visibility reduction below ¾ SM NA.</p>	

ASOS 119.025	POTOMAC APP CON (001°-185°) 126.4 307.2 (186°-360°) 126.75 307.2	CLNC DEL 125.4	UNICOM 122.7 (CTAF) 0
------------------------	--	--------------------------	---------------------------------



ELEV 207	TDZE 207
-----------------	-----------------



BAWAW	2000	BOCAB	↙	CALMI	↙	ISSIG
	↑	✧	tr 059°	✧	tr 324°	✧
Procedure Turn NA	ASNAY VGSi and RNAV glidepath not coincident (VGSi Angle 3.00/TCH 40).					
1800	159°		1800		RWY 16	
GP 3.00° TCH 40	6.1 NM		4.8 NM			
CATEGORY	A	B	C	D		
LPV DA	535-1¼		328 (400-1¼)			
LNAV/VNAV DA	564-1¼		357 (400-1¼)			
LNAV MDA	700-1	493 (500-1)	700-1¼	700-1½	493 (500-1½)	
CIRCLING	700-1	493 (500-1)	900-2	1020-2¾	813 (900-2¾)	

NE-3, 11 JUN 2026 to 09 JUL 2026

NE-3, 11 JUN 2026 to 09 JUL 2026