

VORTAC RIC 114.1 Chan 88	APP CRS 165°	Rwy Ldg TDZE Apt Elev 5402 207 207
--	------------------------	--

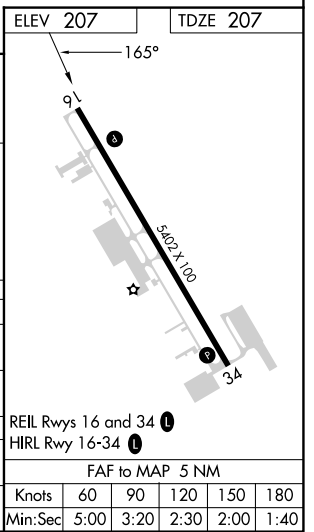
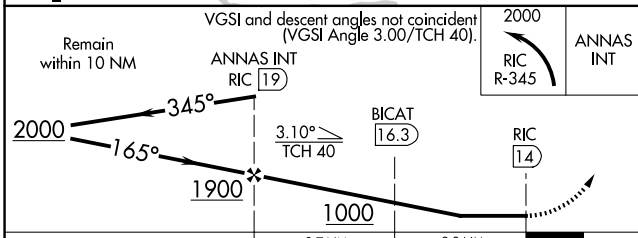
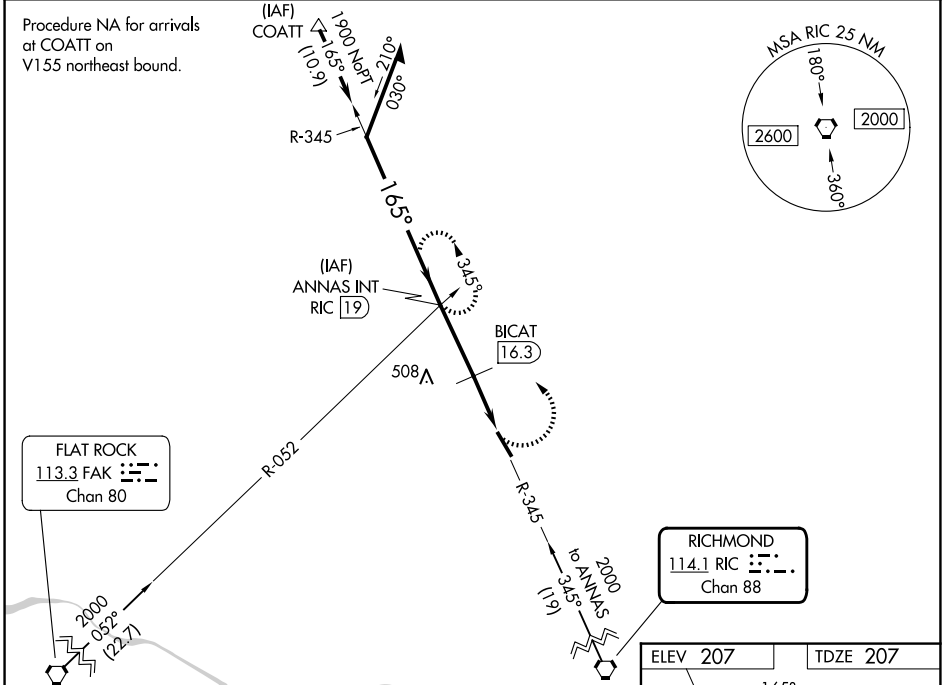
VOR RWY 16

HANOVER COUNTY MUNI (OFP)

⚠ When local altimeter setting not received, use Richmond Intl altimeter setting and increase all MDA 40 feet. Rwy 16 helicopter visibility reduction below ¼ SM NA.

⚠ MISSED APPROACH: Climbing left turn to 2000 via RIC R-345 to ANNAS INT/19 DME and hold.

ASOS 119.025	POTOMAC APP CON (001°-185°) 126.4 307.2 (186°-360°) 126.75 307.2	CLNC DEL 125.4	UNICOM 122.7 (CTAF) 📞
------------------------	--	--------------------------	--



CATEGORY	A	B	C	D
S-16	1000-1 793 (800-1)	1000-1¼ 793 (800-1¼)	1000-2¼ 793 (800-2¼)	1000-2½ 793 (800-2½)
CIRCLING	1000-1 793 (800-1)	1000-1¼ 793 (800-1¼)	1000-2¼ 793 (800-2¼)	1020-2¾ 813 (900-2¾)
BICAT FIX MINIMUMS (DME REQUIRED)				
S-16	820-1	613 (700-1)	820-1¾	613 (700-1¾)
CIRCLING	820-1	613 (700-1)	900-2 693 (700-2)	1020-2¾ 813 (900-2¾)

NE-3, 11 JUN 2026 to 09 JUL 2026

NE-3, 11 JUN 2026 to 09 JUL 2026