

WAAS CH 77903 W26A	APP CRS 259°	Rwy Ldg TDZE Apt Elev	4001 390 394
--	------------------------	-----------------------------	---

RNAV (GPS) RWY 26

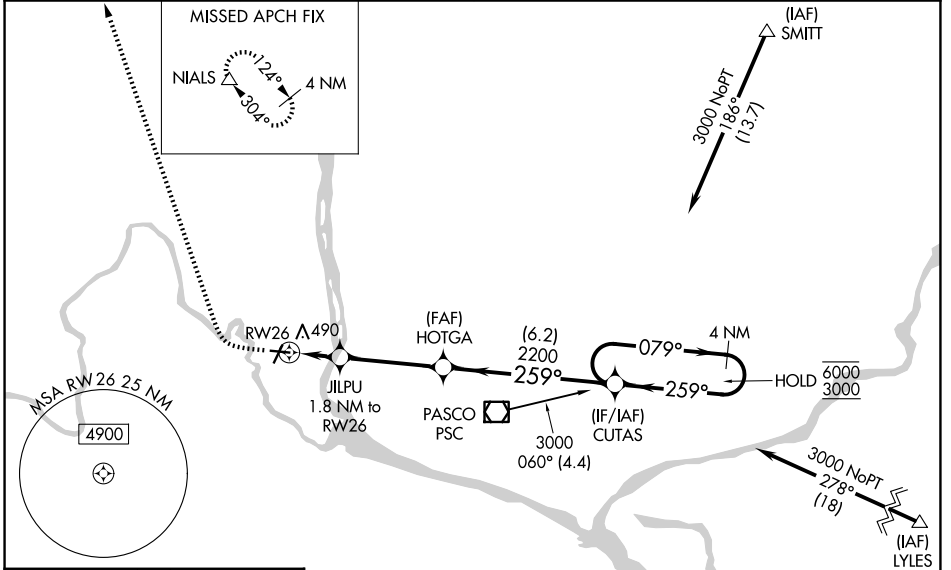
RICHLAND (R.LD)

RNP APCH - GPS.

⚠ For uncompensated Baro-VNAV systems, LNAV/VNAV NA below -12°C or above 54°C. Rwy 26 helicopter visibility reduction below 3/4 SM NA. Baro-VNAV and VDP NA when using PSC altimeter setting. When local altimeter setting not received, use PSC altimeter setting and increase LPV DA to 666 feet; increase LNAV/VNAV DA to 671 feet; increase all MDAs 20 feet and Circling visibility Cat C 1/4 SM.

MISSED APPROACH: Climb to 900 then climbing right turn to 3500 direct NIALS and hold.

AWOS-3PT 132.675	SPOKANE APP CON * 128.75 377.2	CLNC DEL 122.4	UNICOM 122.7 (CTAF) 0
----------------------------	--	--------------------------	---------------------------------

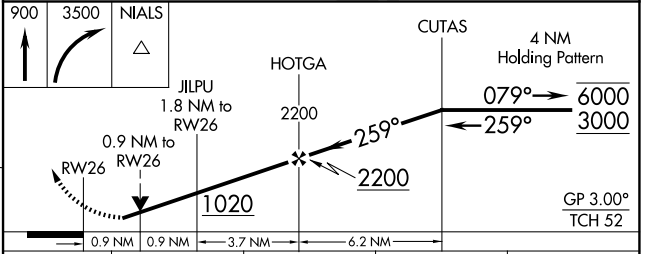
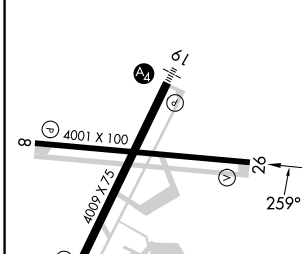


NW-1, 11 JUN 2026 to 09 JUL 2026

NW-1, 11 JUN 2026 to 09 JUL 2026

ELEV 394	TDZE 390
----------	----------

Procedure NA for arrival on PSC VOR/DME airway radials 306 CW 153.



	A	B	C	D
CATEGORY	A	B	C	D
LPV DA		646-7/8	256 (300-7/8)	
LNAV/VNAV DA		651-7/8	261 (300-7/8)	
LNAV MDA		740-1	350 (400-1)	
CIRCLING	820-1 426 (500-1)	1000-1 606 (700-1)	1200-2 1/4 806 (900-2 1/4)	1960-3 1566 (1600-3)

REIL Rwy 1 and 19 **0**
MIRL Rwy 1-19 and 8-26 **0**