

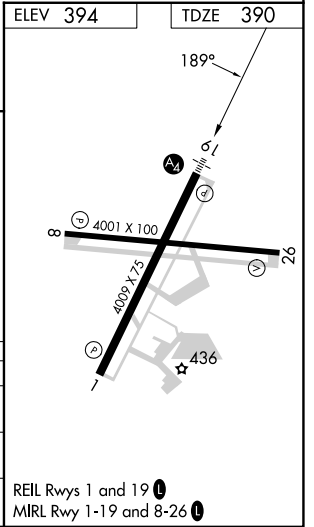
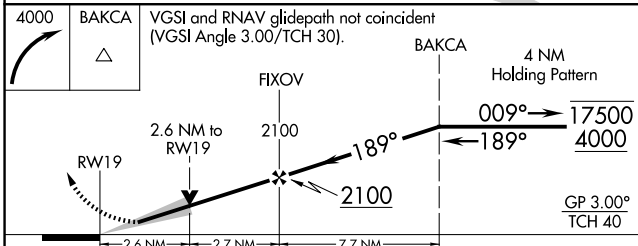
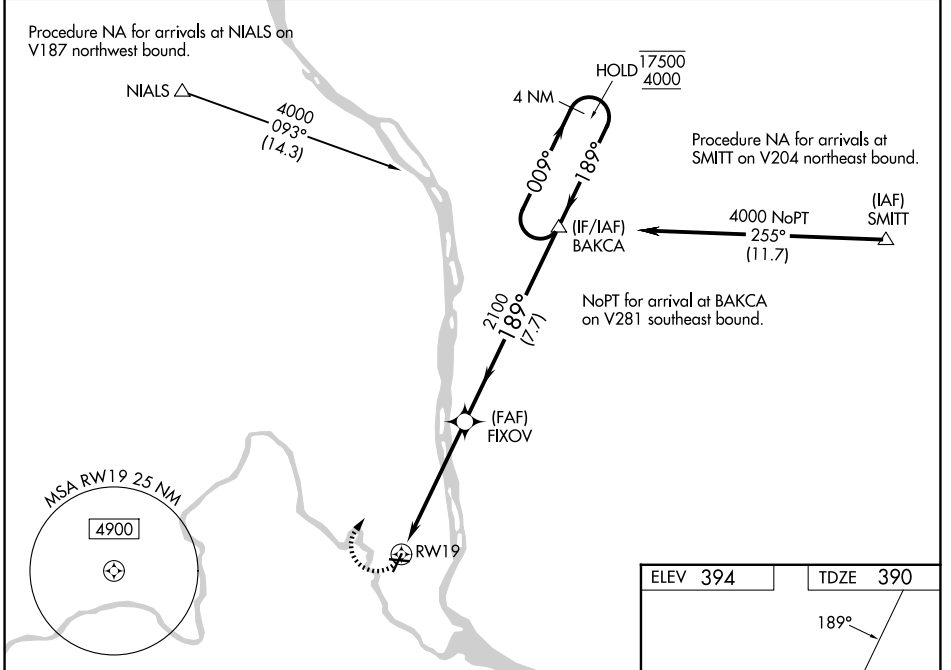
APP CRS	Rwy Ldg	<b>4009</b>
<b>189°</b>	TDZE	<b>390</b>
	Apt Elev	<b>394</b>

# RNAV (GPS) Y RWY 19

RICHLAND (R.LD)

RNP APCH - GPS.	<p>MALS</p>	<p>MISSED APPROACH: Climbing right turn 4000 direct BAKCA and hold, continue climb-in-hold to 4000.</p>
<p>▼ For uncompensated Baro-VNAV systems, LNAV/VNAV NA below -12°C or above 54°C. Baro-VNAV and VDP NA when using PSC altimeter setting. When local altimeter setting not received, use PSC altimeter setting and increase LNAV/VNAV DA to 814 feet; increase all MDAs 20 feet and LNAV visibility Cat C/D ½ SM. For inop ALS increase LNAV/VNAV visibility all Cats to 1½ and LNAV Cat C and D visibility to 2½ SM.</p>		

AWOS-3PT <b>132.675</b>	SPOKANE APP CON * <b>128.75 377.2</b>	CLNC DEL <b>122.4</b>	UNICOM <b>122.7 (CTAF)</b>
----------------------------	--	--------------------------	-------------------------------



CATEGORY	A	B	C	D
LNAV/VNAV DA	794-1 404 (400-1)			
LNAV MDA	1240-7/8 850 (900-7/8)	1240-1 850 (900-1)	1240-2	850 (900-2)
CIRCLING	1240-1¼	846 (900-1¼)	1240-2½ 846 (900-2½)	1960-3 1566 (1600-3)

NW-1, 11 JUN 2026 to 09 JUL 2026

NW-1, 11 JUN 2026 to 09 JUL 2026