

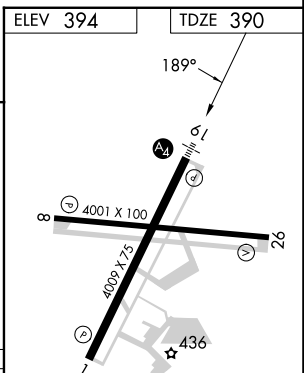
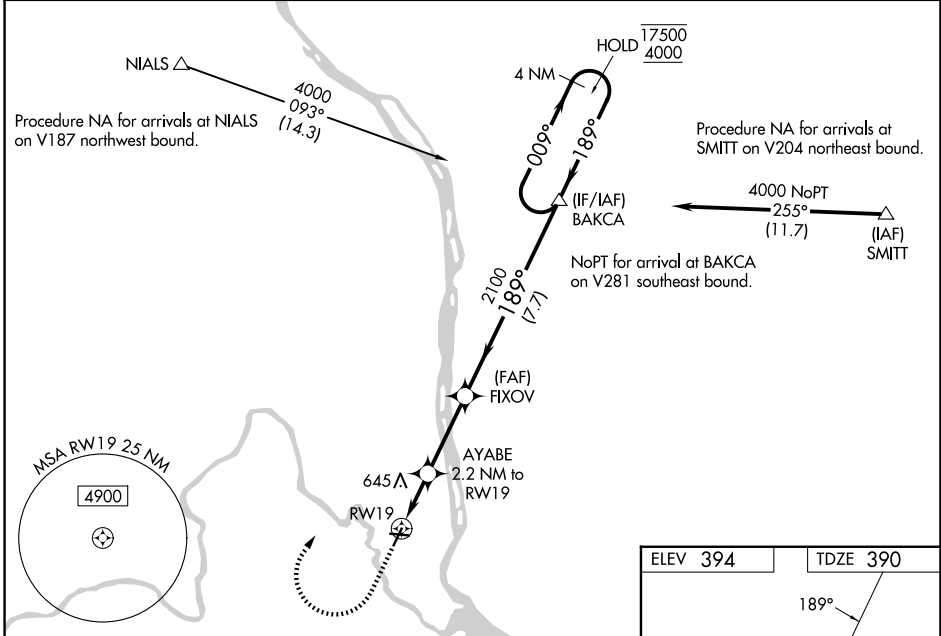
APP CRS	Rwy Ldg	4009
189°	TDZE	390
	Apt Elev	394

RNAV (GPS) Z RWY 19

RICHLAND (R.LD)

RNP APCH - GPS.		MALSS 	MISSED APPROACH: Climb to 900 then climbing right turn to 4000 direct BAKCA and hold. *Missed approach requires minimum climb of 340 feet per NM to 2000; if unable to meet climb gradient, see RNAV (GPS) Y RWY 19.
For uncompensated Baro-VNAV systems, LNAV/VNAV NA below -12°C or above 54°C. Baro-VNAV and VDP NA when using PSC altimeter setting. For inop ALS when using PSC altimeter setting, increase LNAV Cats C and D visibility to 1 3/8 SM. When local altimeter setting not received, use PSC altimeter setting and increase LNAV/VNAV DA to 671 feet; increase all MDAs 20 feet and LNAV visibility Cats C and D 1/8 SM, and Circling visibility Cat C 1/4 SM.			

AWOS-3PT 132.675	SPOKANE APP CON * 128.75 377.2	CLNC DEL 122.4	UNICOM 122.7 (CTAF)
----------------------------	--	--------------------------	-------------------------------



900	4000	BAKCA	VGSI and RNAV glidepath not coincident (VGSI Angle 3.00/TCH 30).			
↑			FIXOV	BAKCA	4 NM Holding Pattern	
			AYABE 2.2 NM to RW19	2100	17500 4000	
			RW19 1.3 NM to RW19	1120	189°	
				2100	009° → ← 189°	
					GP 3.00° TCH 40	
CATEGORY	A	B	C	D		
LNAV/VNAV DA*	651-7/8		261 (300-7/8)			
LNAV MDA*	840-7/8 450 (500-7/8)		840-1 450 (500-1)			
CIRCLING	840-1 446 (500-1)	1000-1 606 (700-1)	1200-2 1/4 806 (900-2 1/4)	1960-3 1566 (1600-3)		

REIL Rwy 1 and 19
MIRL Rwy 1-19 and 8-26

NW-1, 11 JUN 2026 to 09 JUL 2026

NW-1, 11 JUN 2026 to 09 JUL 2026