

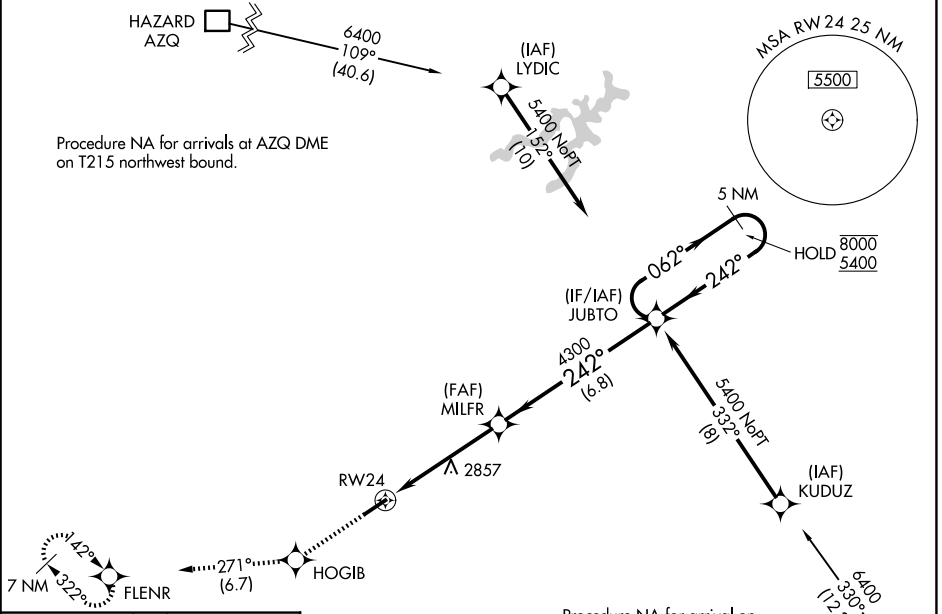
APP CRS 242°	Rwy Ldg TDZE Apt Elev	5131 2685 2685
------------------------	-----------------------------	---

RNAV (GPS) RWY 24

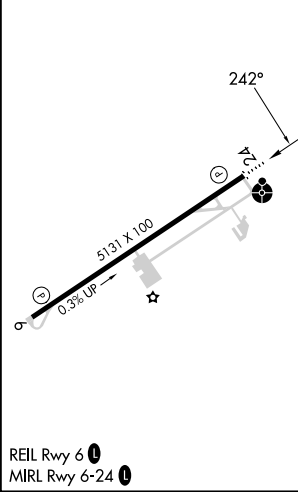
LONESOME PINE (LNP)

RNP APCH - GPS.		ODALS	MISSED APPROACH: Climb to 6400 direct HOGIB and on track 271° to FLENR and hold, continue climb-in-hold to 6400.
<p>▽ Rwy 24 helicopter visibility reduction below 1 SM NA. Procedure NA at night. Inop table does not apply to LNAV Cats A/B. For inop ALS, increase LNAV Cat C/D visibility to 1½ SM.</p>			

AWOS-3 118.6	INDIANAPOLIS CENTER 126.575 257.85	UNICOM 123.0 (CTAF) 0
------------------------	--	---------------------------------

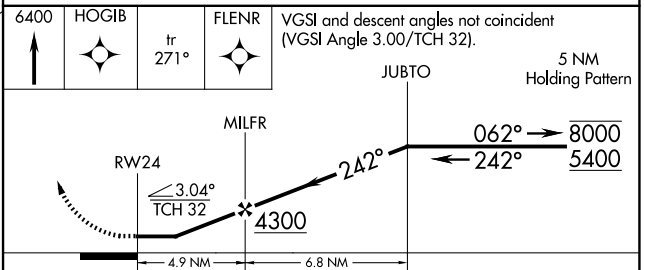


ELEV 2685	TDZE 2685
-----------	-----------



Procedure NA for arrival on GZG VOR/DME airway radials 248 CW 058.

GLADE SPRING GZG



CATEGORY	A	B	C	D
LNAV MDA	3140-1	455 (500-1)	3140-1½	455 (500-1½)
CIRCLING	3240-1 555 (600-1)	3360-1 675 (700-1)	3380-2 695 (700-2)	3580-2¾ 895 (900-2¾)

NE-3, 11 JUN 2026 to 09 JUL 2026

NE-3, 11 JUN 2026 to 09 JUL 2026