

WAAS CH <b>93627</b> <b>W30A</b>	APP CRS <b>300°</b>	Rwy Idg TDZE Apt Elev	<b>5596</b> <b>1456</b> <b>1456</b>
----------------------------------------	------------------------	-----------------------------	-------------------------------------------

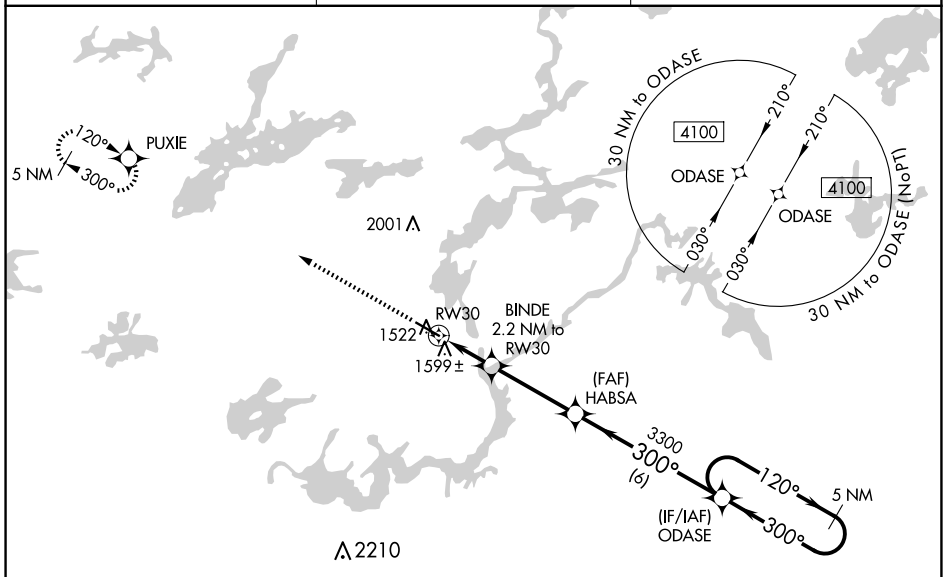
# RNAV (GPS) RWY 30

ELY MUNI (E.L.O)

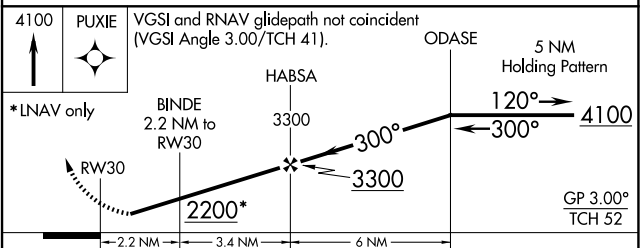
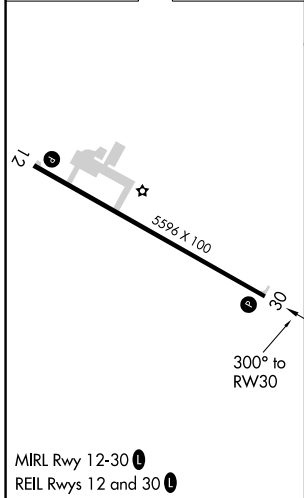
**⚠** Baro-VNAV NA when using Cook altimeter setting. For uncompensated Baro-VNAV systems, LNAV/VNAV NA below -17°C (2°F) or above 34°C (93°F). DME/DME RNP-0.3 NA. Helicopter visibility reduction below 3/4 SM NA. When local altimeter setting not received, use Cook altimeter setting and increase all DA/MDA 100 feet; increase LPV visibility 1/8 mile all Cats, LNAV/VNAV visibility 3/8 mile all Cats, and LNAV Cat C/D visibility 1/4 mile.

MISSED APPROACH: Climb to 4100 direct PUXIE and hold.

AWOS-3PT <b>132.025</b>	MINNEAPOLIS CENTER <b>127.9 281.45</b>	UNICOM <b>122.8 (CTAF) 0</b>
----------------------------	-------------------------------------------	---------------------------------



ELEV 1456	TDZE 1456
-----------	-----------



CATEGORY	A	B	C	D
LPV DA		1706-1	250 (300-1)	
LNAV/VNAV DA		1780-1	324 (400-1)	
LNAV MDA	1860-1	404 (500-1)	1860-1½	404 (500-1½)
CIRCLING	1920-1 464 (500-1)	1940-1 484 (500-1)	1940-1½ 484 (500-1½)	2360-3 904 (1000-3)