

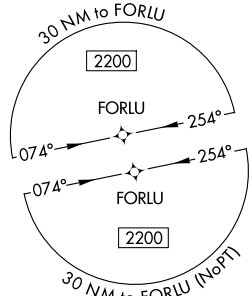
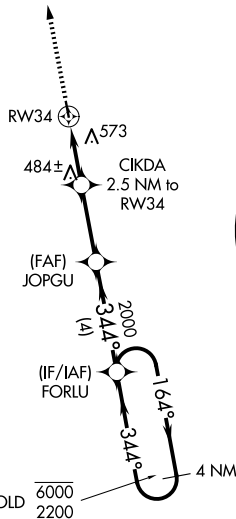
WAAS CH 93925 W34A	APP CRS 344°	Rwy Ldg 3218 TDZE 288 Apt Elev 289
--	------------------------	---

RNAV (GPS) RWY 34

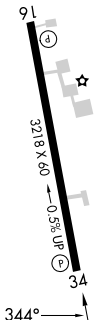
KENEDY RGNL (2R.9)

RNP APCH - GPS.	MISSED APPROACH: Climb to 2000 direct WONIX and hold.
<p>Procedure NA at night. Rwy 34 helicopter visibility reduction below 1 SM NA. When local altimeter setting not received, use PEZ altimeter setting and increase all MDAs 100 feet.</p>	

AWOS 3-PT 118.45	HOUSTON CENTER 134.6 322.5	UNICOM 123.0 (CTAF) 0
----------------------------	--------------------------------------	---------------------------------



ELEV 289	TDZE 288
----------	----------



REIL Rwy 16
MIRL Rwy 16-34 0

2000	WONIX	Visual Segment - Obstacles.			
↑	☼	CIKDA 2.5 NM to RW34	JOPGU	FORLU	4 NM Holding Pattern
		1100	2000	6000	2200
		2.5 NM	2.8 NM	4 NM	
CATEGORY	A	B	C	D	
LP MDA	840-1	552 (600-1)		NA	
LNAV MDA	900-1	612 (700-1)		NA	

SC-3, 11 JUN 2026 to 09 JUL 2026

SC-3, 11 JUN 2026 to 09 JUL 2026