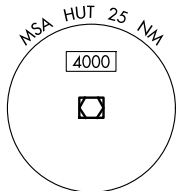
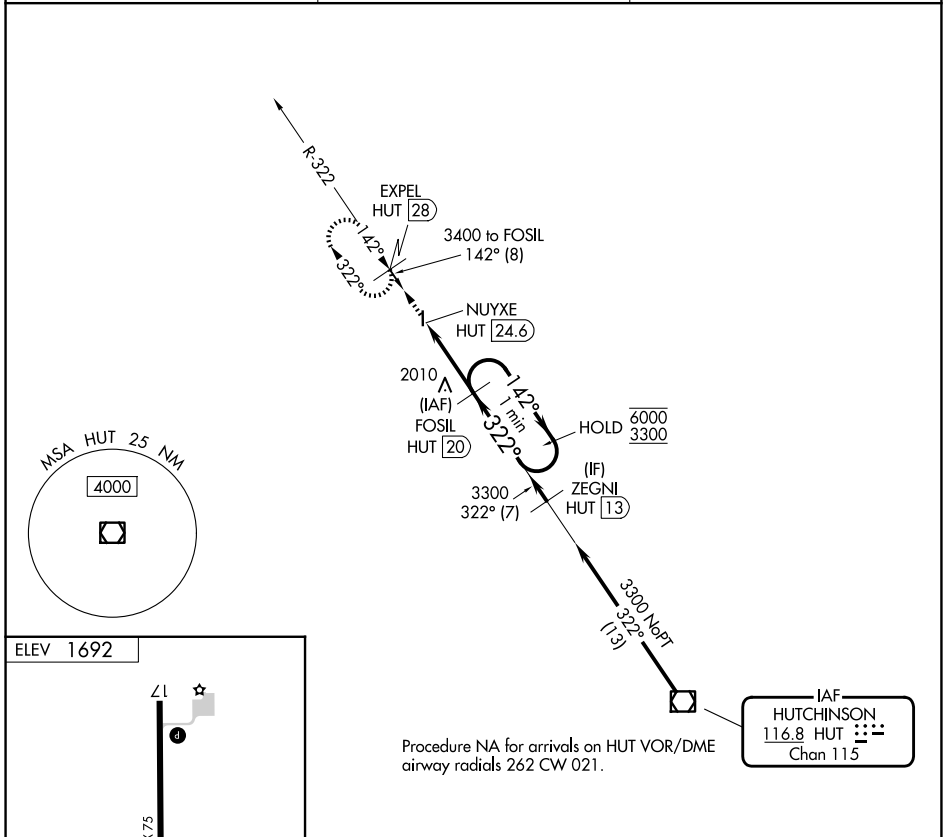


VOR/DME HUT <b>116.8</b> Chan <b>115</b>	APP CRS <b>322°</b>	Rwy Ldg TDZE Apt Elev	<b>N/A</b> <b>N/A</b> <b>1692</b>
--	------------------------	-----------------------------	---

**VOR-A**  
LYONS-RICE COUNTY MUNI (LYO)

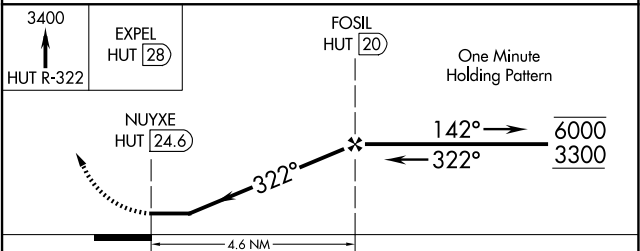
DME required.	MISSED APPROACH: Climb to 3400 on HUT VOR/DME R-322 to EXPEL/HUT 28 DME and hold.
---------------	---

AWOS-3P <b>119.925</b>	KANSAS CITY CENTER <b>118.8 322.425</b>	UNICOM <b>122.8 (CTAF) 0</b>
---------------------------	--	---------------------------------



ELEV 1692

MIRL Rwy 17-35  
REL Rws 17 and 35



CATEGORY	A	B	C	D
CIRCLING	2400-1	708 (800-1)	NA	

NC-2, 11 JUN 2026 to 09 JUL 2026

NC-2, 11 JUN 2026 to 09 JUL 2026